



TAURANGA YACHT
& POWER BOAT CLUB

2017 Matakana Classic

11 November 2017

The Organising Authority is
Tauranga Yacht and Power Boat Club (Inc) (TYPBC)
PO Box 14352, Tauranga. Phone (64) 07 578 5512 Fax 07 578 5595

Email office@yacht.org.nz

SAILING INSTRUCTIONS

1 RULES

The races will be governed by the 'rules' as defined in the Racing Rules of Sailing 2017-2020

- 1.1 The Yachting New Zealand (YNZ) Safety Regulations Part II Category 5 (Multihulls), and Part 1 Unballasted Centreboard & Open Yachts are the minimum safety requirement unless otherwise specified – See Safety Regulations and Requirements

2 NOTICES TO COMPETITORS

Notices to the competitors will be posted on the official notice board located in the TYPBC clubhouse. Notices will also be made during the briefing. The briefing will be held approx 30 minutes before the start of the race.

3 CHANGES TO SAILING INSTRUCTIONS

Any change to the sailing instructions will be posted before 1000 on the day it will take effect, except that any change to the schedule of races will be posted by 1800 on the day before it will take effect. Changes to the sailing instructions will be advised during the pre-leg briefing

4 RACING AREA

The New Zealand Marine Chart [NZ5411 \(link here\)](#) covers the area of the course, being Tauranga harbour and the coastal waters between Bowentown and Tauranga entrances.

5 THE COURSES

5.1 The diagrams in Attachment 1 show the courses.

The courses are also detailed below.

5.2 **Matakana Classic** – Saturday 11th November 2017 to be determined by the course chosen below (controlled by tower). The reserve day is Sunday 12th November 2017.

5.3 Courses:

Course 1

1. Start between “Otumoetai A” green beacon and the flag pole in front of the TYPBC from 1200hrs
2. Dir WRG.5m (Orange Neon shipping mark) to Starboard
3. Out the Mt Maunganui entrance “Matakana Island” to Port
4. In the Bowentown entrance
5. Pass through the middle harbour
6. Finish is touching the flag pole in front TYPBC
7. Please note that Karewa Island is a fairway mark and vessels competing must pass Karewa on the beach side, vessels who sail further outside Karewa Island will be disqualified.

Course 2

1. Start between “Otumoetai A” green beacon and the flag pole in front of the TYPBC from 1200hrs
2. Pass through the middle harbour
3. Out the Bowentown entrance
4. Karewa Island to Port
5. In the Mt Maunganui entrance “Matakana Island” to Starboard
6. Dir WRG.5m (Orange Neon shipping mark) to Port
7. Finish is touching the flag pole in front TYPBC
8. Please note that Karewa Island is a fairway mark and vessels competing must pass Karewa on the beach side, vessels who sail further outside Karewa Island will be disqualified.

5.3(i) If the Katikati entrance is deemed too dangerous to attempt to sail through an alternative course up to the safe water mark (approx, S 37.27.750 E176.10.400) and return may be used, or the “fat lady” (approx. E 37.28.300 S 175.58.700) mark and return may be used as an inside course

5.4 The **Finish point** is the front the TYPBC club house. Boats will arrive at the beach and a crew member will then run and touch the front of the yacht club. Larger yachts can record their position and time when crossing the transit between TYPBC and Otumoetai A. All competitors must record their own time off a GPS or a watch that has been synchronised with a GPS immediately before the start.

6.0 Prize Giving will be approximately 1 hour after last boat has finished.

7.0 PROTESTS AND REQUESTS FOR REDRESS

7.1 For protests where only a rule of Part 2, *When Boats Meet*, or Rule 31, *Touching A Mark*, is alleged to have been broken, an arbitration hearing will be offered prior to any formal hearing. Yachting New Zealand 4.5.5 will apply. (This changes Rule 44.1, *Taking A Penalty*). The scoring abbreviation for a penalty accepted at an arbitration hearing is ARB.

7.2 Rule 44.1 is changed as follows: 1. A boat may take a 1 turn penalty when she may have broken one or more rules if Part 2 in an incident while racing. 2. A boat that has broken a rule of Part 2 or rule 31 may take a penalty after racing but prior to any protest hearing. Her penalty shall be a scoring penalty as calculated in rule 44.3(c) equal to 40% of the number of entries in her fleet or 50% of the difference between her finishing position and the number of entries in her fleet, whichever is less

7.3 Protests must be lodged with the race officer. within 1 hour after the protesting boat has finished or withdrawn.

8.0 PENALTY SYSTEM

Paddles may only be used to ensure the safety of the vessel and its crew. If used, they must be to propel the yacht to where it can safely sail again and then the yacht must complete a 360 penalty turn before re-commencing racing.

9.0 SCORING

The yachts corrected time shall determine their finishing place, using the following ratings

Marstrom Tornado with Carbon rig 1.25
Marstrom Tornado with Ali rig 1.24
Other Glass Tornado with Carbon rig 1.23
Other Glass Tornado with Ali rig 1.22
Wooden Tornado with Carbon rig 1.21
Wooden Tornado with Ali rig 1.2
Other 20ft cat 1.15
19ft Multihull 1.1
F18 1.08
Other 18ft Multihull 1.07
17ft Multihull 1.05
F16 1
Hobie16 0.95
Weta 0.925
Hobie14 0.85

10 SAFETY REGULATIONS

- 10.1** It is the Skippers responsibility to ensure their boat is meets the safety regulations.
- 10.2** All boats must submit prior to the safety inspection, a completed and signed Safety Declaration Form.
- 10.3** Yachts with a greater length than 7m must comply with the YNZ Safety Regulations Part II Category 5.
- 10.4** Open yachts under 7m in length must comply with the YNZ Safety Regulations Part 1 Unballasted Centreboard and open Yachts.
In addition all yachts shall carry and have a serviceable VHF radio. Channel 77 will be used for the race.
All Yachts must carry a working hand held GPS.
- 10.5** Yachts must have a suitable attachment point for a tow rope.
- 10.6** All yachts must have either a set of 2 paddles and a suitable tow rope, or a serviceable inboard or outboard motor.
- 10.6** All vessels must carry a minimum of 1 orange smoke flare for each crew member.
- 10.7** Competitors must wear their PFD's (buoyancy vests) at all times.

11 EQUIPMENT AND MEASUREMENT CHECKS

- 11.1** A boat or equipment may be inspected at any time for compliance with the relevant rules and sailing instructions.
- 11.2** The RO may lodge a protest against any boat that is found not to comply with the relevant rules of these sailing instructions.
- 11.3** Camel (back)packs of up to 2.0 Litres are allowed and will not be considered as additional water ballast.

12 TRASH DISPOSAL

Boats shall not put trash in the water. Trash may be placed aboard support and race committee boats.

13 SHIPPING MOVEMENTS

All competitors shall keep clear of all shipping movements in the Tauranga Harbour limits, failure to do so may result in disqualification from the race.

14 RADIO COMMUNICATION

14.1 Except in an emergency, a boat shall neither make radio transmissions while racing nor receive radio communications not available to all boats. This restriction also applies to mobile telephones.

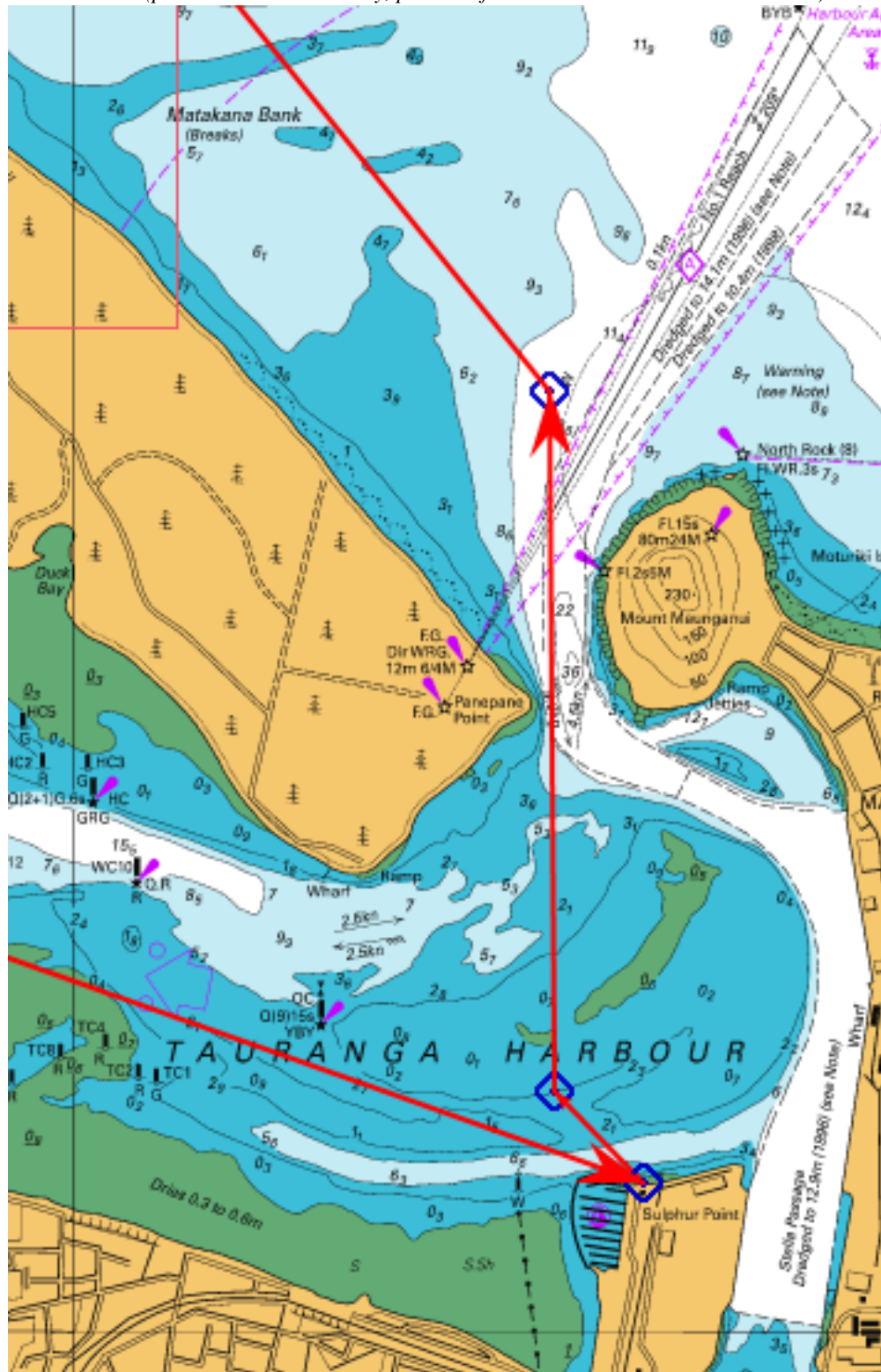
14.2 In an emergency, all radio communications must in the first instance be via patrol boat on channel 77. Only if the patrol is not contactable, or directed by the patrol boat should the competitor communicate directly with the coastguard.

15 DISCLAIMER OF LIABILITY

Competitors participate in the regatta entirely at their own risk. See rule 4, *Decision to Race*. The organizing authority will not accept any liability for material damage or personal injury or death sustained in conjunction with or prior to, during, or after the regatta.

ADDENDUM A ILLUSTRATING THE COURSE

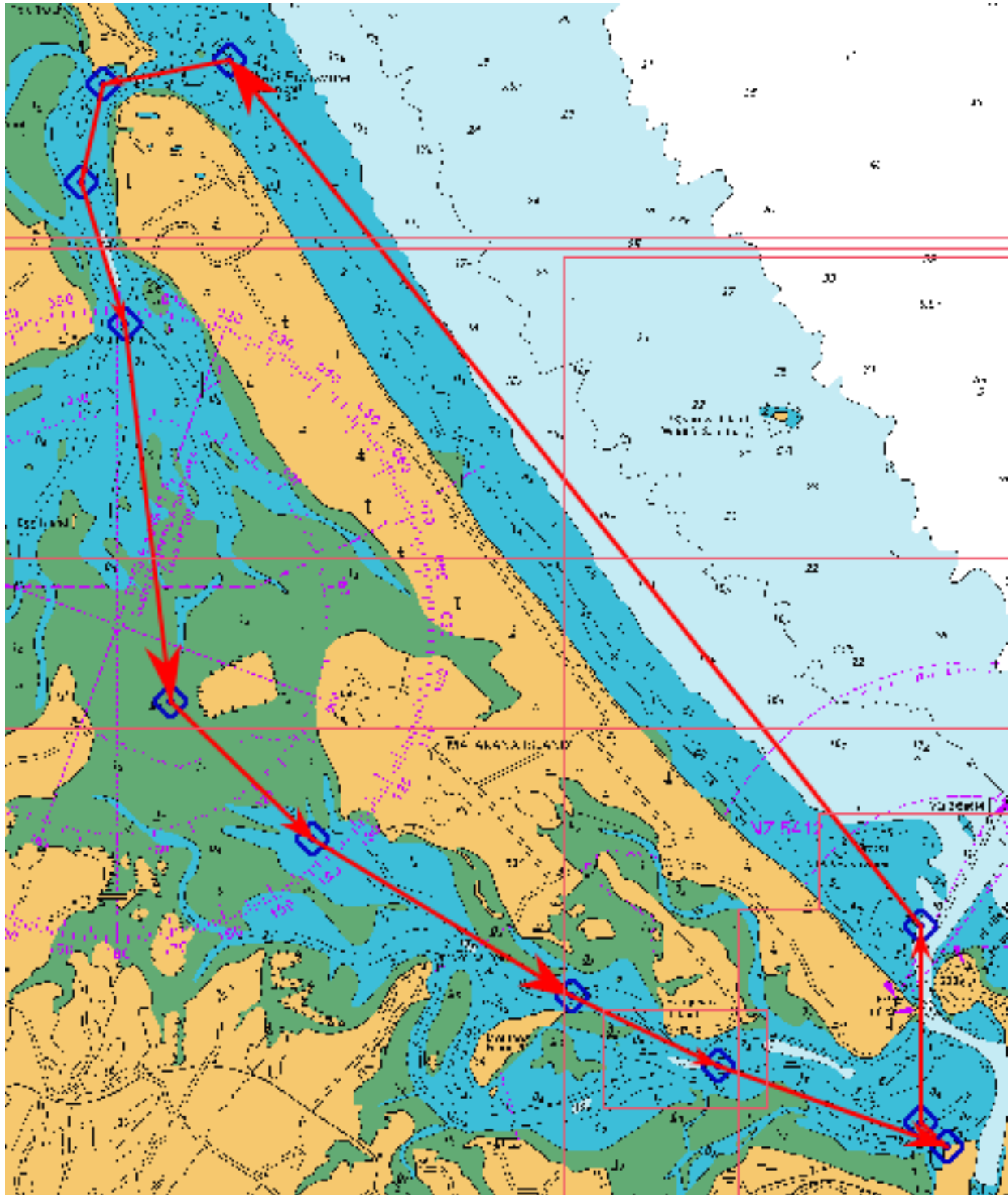
Course 1 (picture is indicative only, please refer to the written instructions above)

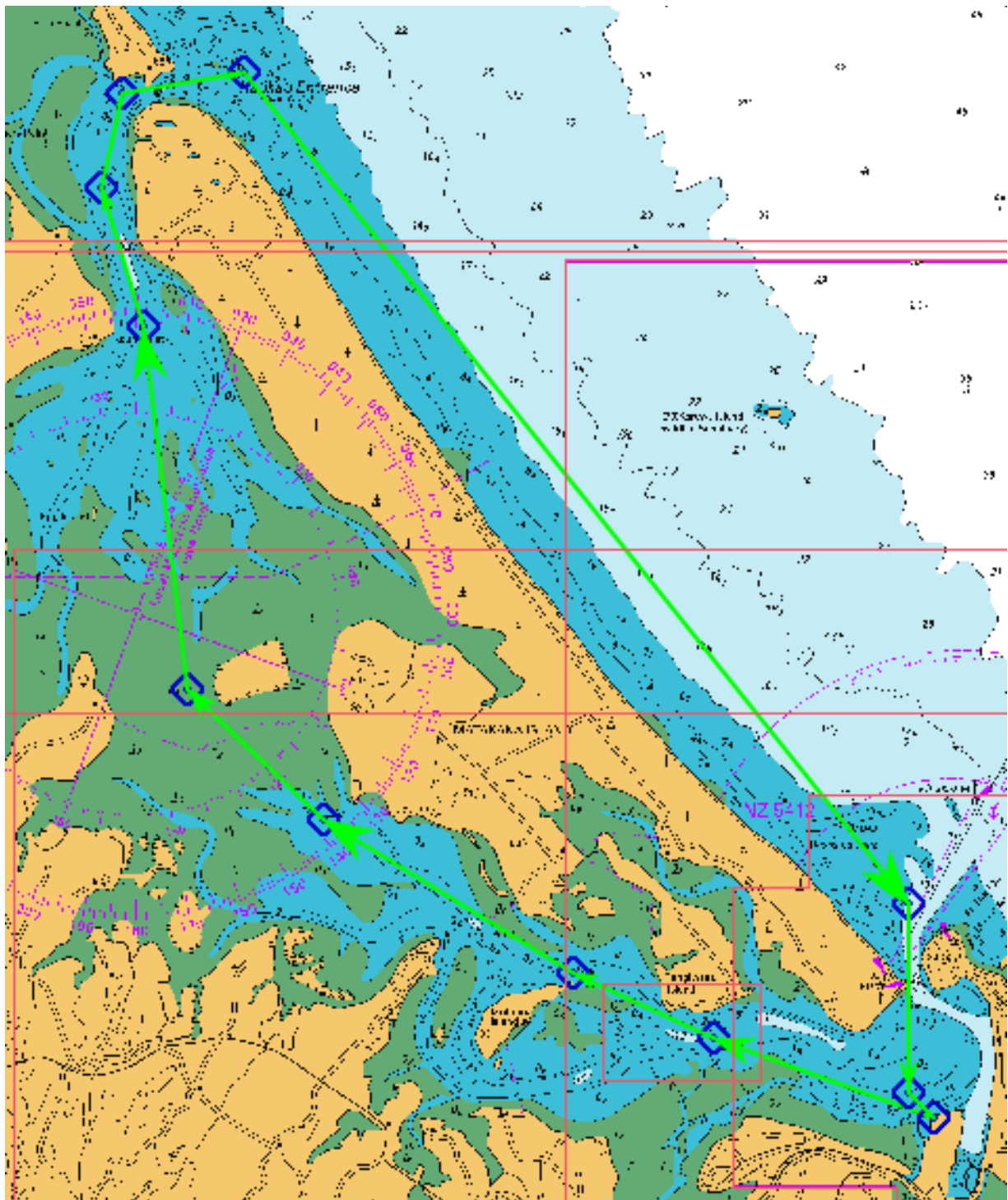


Course 2 (picture is indicative only, please refer to the written instructions above)



Courses (Red arrows = Course 1, Green arrows = Course 2)





Safe water mark off Bowentown and the Fat Lady inside the entrance

