

TABLE OF CONTENTS

| | |
|---|----|
| Safety Declaration | |
| Introduction | 1 |
| Safety guidelines | 2 |
| General Sailing Instructions | 4 |
| 1 Rules | 4 |
| 2 Notices to Competitors | 4 |
| 3 Changes to Sailing Instructions | 4 |
| 4 Signals | 4 |
| 5 Schedule of Races | 4 |
| 6 Divisions | 5 |
| 7 Handicaps | 5 |
| 8 The Courses | 5 |
| 9 The Start | 5 |
| 10 Change of Course | 7 |
| 11 The Finish | 7 |
| 12. Finishing Declarations | 7 |
| 13 Penalty System | 7 |
| 14 Time Limits | 8 |
| 15 Protests and Requests for Redress | 8 |
| 16 Scoring | 8 |
| 17 Safety Regulations | 9 |
| 18 Equipment and Measurement Checks | 9 |
| 19 Radio Communication | 9 |
| 20 Disclaimer of Liability | 9 |
| Attachment A: Marks etc. used in races. | 10 |
| Chart of Harbour | 11 |
| Mark numbers | 12 |
| GPS Waypoint Chart | 13 |
| Category 4 plus safety requirements | 13 |
| Attachment B: Harbour Courses | 14 |
| Keeler Division Trophy List | 16 |
| Attachment C: Keeler, Multihull & Trailer Yacht Extra Race schedule | 17 |
| Notice of Race Summer Wednesday Series | 18 |
| Notice of Race Thursday Night Women on Water (WOW) Series | 19 |
| Notice of Race Friday Night Fun Races | 20 |
| Notice of Race Keeler Bluewater Series | 21 |
| Notice of Race Steve's Marine Supplies Karewa Series | 22 |
| Notice of Race Keeler Inshore Series | 23 |
| Notice of Race Multihull Harbour Series | 24 |
| Notice of Race Short handed series | 25 |
| Notice of Race Burnsco Marine Winter Series | 26 |
| Finishing Declarations | 27 |

INTRODUCTION

This booklet contains the general Sailing Instructions for Keelers, Multihulls and Trailer Yachts, for the 2017 -2018 Season. They also apply to Centreboard Yachts (including multihulls) when sailing with Keelers and Trailer Yachts. All races will be sailed under these Instructions unless they are varied by Special Instructions or Notice to Competitors.

The following 2017 -2018 Notices of Race are included in this booklet:

- Wednesday Summer Series
- Thursday Night Women on Water (WOW) Series
- Friday Night Fun Races
- Keeler / Multihull Bluewater Series
- Steve's Marine Supplies Karewa Series
- Keeler Inshore Series
- Multihull Harbour Series
- Short Handed series
- Burnsco Winter series

Other Notices of Race may be issued from time to time.

The Club Safety Officer may inspect boats at any reasonable time and may lodge a protest against boats on technical or safety grounds.

All skippers must, and crew are recommended, to read these Sailing Instructions carefully and become familiar with them.

Good Sailing!

RACE COMMITTEE

- Andy Knowles
- Nick Wrinch
- Bill Whitiskie
- Warren Belk
- Graham Vincent
- Phil West
- Gary Smith
- Delwyn Keyworth

HANDICAP COMMITTEE

- Gary Smith
- Bill Faulkner

At least 2 other members selected by above

Safety Guidelines

1. Bump to the head / possible concussion – keep an eye on the person and see whether their movements or responses are a bit impaired. If so be wary on what crew position you put them in case they not able to perform duties. Suggest keeping warm.
2. Bad bruise or cut – apply first aid treatment with RICE (Rest Ice Compression Elevation). Avoid consumption of alcohol as this will increase blood flow and swelling.
3. Serious boat collision – Important to remain calm and pause for 10secs. In this 10secs take a 360° look around at what has happened, and plan the sequence of what you will do next. Being calm helps crew to remain calm. Always helpful to have a de brief once emergency over to discuss how to avoid happening again.
4. Close sailing racing – inform crew to be ready to move if necessary e.g. if on rail with legs over the side, be prepared to move in hurry to avoid them being crushed.
5. Regularly check if your radio is working by testing it both transmitting and receiving. Be familiar with what level of squelch your radio requires. Have a clear sealed bag to put a cell phone into as a backup. Have a list of commonly used channels visible by radio e.g. 77: club racing, 16 : Emergency / Distress, 79: Bay of Plenty weather, 01: Tauranga Coastguard. Have instructions visible on how a distress call is made, and encourage your crew to make radio calls to become familiar with radio.
6. Enough fuel – periodically check to make sure you have sufficient fuel to get to destination, it's undesirable having to call for a tow or having to try sailing back into your berth.
7. If you see something potentially damaging in the water and manage to avoid it, you're lucky, but the next person may not be. Be a good Samaritan and report it to the coast guard on channel 01.
8. Keep your crew familiar with where lifejackets are and practice putting them on. Try a mock situation where you ask your crew to quickly put lifejackets on. Hopefully you're not horrified how long this takes to achieve.
9. Emergency anchor – similar to lifejackets, there may be a time when you need to quickly drop anchor so make sure it's easily accessible and crew know how to use it.
10. Educate crew how to start and operate your engine. It helps make them feel more comfortable with your "special" starting regime, and will be easier than trying to explain what to do after you've fallen off the side and your boat is sailing away from you.
11. Longer races – a long day on the water can be exhausting, even in fine weather. Encourage the drinking of fluids and eating of food. Lack of either can lead to crew becoming fatigued and less capable.

12. Getting Cold – water absorbs heat about 15 times faster than air. If you are wet or allow yourself to become wet by not wearing appropriate clothing, your body will have to work extra hard to keep itself warm. Cotton shirts and socks in particular are not good sailing attire, once they are wet they take a long time to dry out.
13. In an unlucky situation, if your boat starts taking on water e.g. hits something or a large hole, you'll have less than a minute before your boat will sink. More critical than calling for help, you need to detach something that will keep you afloat like a dinghy or lifejacket. Calling for help, use the distress call and inform of the 3 P's – Your **P**osition, what the **P**roblem is, how many **P**eople involved.
14. Share you travel plans - Tell someone that your heading out, where you're going and when they should expect you home. Be courteous and let them know when you're returned home to avoid causing a panic.
15. FIRE :Need to remove either **fuel** – turn off the gas / petrol supply, or remove combustible material; **heat** – apply cold water; or **oxygen** – smother the fire with CO2 / dry powder or foam, or a fire blanket. When using an extinguisher, keep low and aim at the base of the fire.
- 16 MAN OVERBOARD – shout out “MAN OVERBOARD”. Throw floatation buoy. Nominate someone to keep their eyes on that person the whole time while boat can be turned around.
17. Remember to fill out an injury report form if there has been an injury causing incident. These are available from the club office.

TAURANGA YACHT & POWER BOAT CLUB (Inc)

KEELER, MULTIHULL & TRAILER YACHT DIVISIONS

The Organising Authority is Tauranga Yacht & Power Boat Club Inc. (TYPBC),
PO Box 14352, Tauranga .Phone (07) 578 5512 Fax (07) 578 5595

GENERAL SAILING INSTRUCTIONS

1 RULES

- 1.1 The races (except for the winter series) will be governed by the World Sailing Racing Rules of Sailing 2017 -2020 (RRS).
- 1.2 Between sunset and sunrise boats shall display the lights required under the International Regulations for Prevention of Collisions at Sea. The RRS will continue to apply.
- 1.3 A boat shall not discharge rubbish in the water.
- 1.4 When Trailer Yachts and drop keel boats are racing against Keelers in the same divisions, Trailer Yachts and drop keel boats shall not raise or lower their centreboards or drop keels during a race, except as specifically allowed in SI 13.
- 1.5 All boats shall submit to the TYPBC office the completed Safety Declaration Form (included in this booklet) to be eligible to race.
- 1.6 Keelers and multihulls with a valid Category 3 or above certificate shall provide a copy of this certificate to the TYPBC office prior to entering an outside race that requires this Category. One copy of the certificate shall suffice for the whole season.
- 1.7 **Autopilots.** RRS 52 is changed as follows: For boats competing in races with one, two or three crew members, whether those races are open races, or specific single or short handed races, the use of autopilots is allowed.
- 1.10. **No extras races:** If a race or series is specified as 'no extras', no spinnakers or other sails may be set that are not normally used to advantage to windward. Headsails may be boomed out using a spinnaker pole, but shall only be carried on a permanent load bearing forestay with only one headsail per forestay.
- 1.11 **Shorthanded:** Means a keeler sailed by 1, 2 or 3 crew members. Children under the age of 12 shall not be counted as crew members.
- 1.12 The RRS will be changed in accordance with RRS rule 86 as follows: RRS 27.1 is changed to: No later than the Preparatory signal, the Race Officer shall signal the course to be sailed.
- 1.13 **Moored Boats:** If any boat touches a boat that is moored in a designated mooring area, that boat shall immediately retire from the race, unless she has been forced into the moored boat by the actions of another competitor, AND she immediately protests that other competitor. If the boat does not retire, the boat may be disqualified. Touching a moored boat or forcing another boat to touch a moored boat cannot be exonerated by taking a penalty under RRS rule 44.

2 NOTICES TO COMPETITORS

- 2.1 Notices to competitors will be posted on the website of the TYPBC. It is the responsibility of the skipper to ensure the skipper is aware of any notices and amendments prior to the start of the race.

3 CHANGES TO SAILING INSTRUCTIONS

- 3.1 Any changes to the Sailing Instructions will be posted not less than 2 hours before the starting signal of the first race on the day it will take effect, except that any change to the Schedule of Races will be posted by 1900 hours on the day before it will take effect.

4 SIGNALS

- 4.1 Signals made ashore will be displayed on the TYPBC Clubhouse flagstaff.
- 4.2 When flag Y is displayed ashore or from a Race Committee Boat the Race Officer will broadcast this signal over VHF Channel 77 no later than the first warning signal. RRS Rule 40 applies at all times while afloat. This changes the Part 4 preamble.
- 4.3 When flag L is displayed ashore, there will be a notice to competitors on the notice board. This notice may be broadcast by the Race Officer by VHF prior to the first warning signal. There will be no grounds for protest when a notice is given this way.
- 4.4 **Q (Yellow) Flag.** When flag Q is displayed ashore in the case of a clubhouse start, or from the Race Committee Boat, in the case of a committee boat start, then Substitute **5(P) for P7(P)**, and **5(S) for 6(S)**. This is to keep boats on the western side of the main channel during shipping movements. The Race Officer may bring attention to this signal over VHF radio.

5 SCHEDULE OF RACES

- 5.1 Races are scheduled in the club's official program and in the separate Notices of Race in this booklet, or that may be issued from time to time.
- 5.2 The scheduled time of the warning signal for the first race each day is 5 minutes before the start time written in the club's official program or Notice of Race.
- 5.3 Each division or group of divisions will start at 5 minute intervals.
- 5.4 Divisions may be grouped together and started at the same time. The relevant division flags/boards will be displayed together.
- 5.5 Where all divisions are started at the same time then the all Divisions flag/board will be displayed. Refer SI 6.1.

6 DIVISIONS & Minimum Numbers of Starters

- 6.1 Division flags / boards will be:

| DIVISION | FLAG / BOARD |
|------------------|-------------------|
| Zero (multihull) | Numeral Pennant 0 |
| One | Numeral Pennant 1 |
| Two | Numeral Pennant 2 |
| Three | Numeral Pennant 3 |
| Four | Numeral Pennant 4 |
| All Divisions | Numeral Pennant 7 |
- 6.2 Divisions will be determined by the Keelboat Committee.
- 6.3 The minimum number of entries that will constitute a division in the Summer Wednesday night series shall be 5, except for no extras divisions where 2 boats may constitute a division.
- 6.4 When a visual signal is displayed over or with a division flag/board/s it applies to that division/s only.
- 6.5 Notice of divisions and their starting handicaps will be posted on the TYPBC website at the start of each season or series of races.
- 6.6 The minimum number of boats to constitute a start for a division, or a race if there are no divisions for that race shall be 2.
- 6.7 All keelboat and trailer yacht races may, if there are 2 or more entries sailing single handed or 2 handed, have an additional prize and results for 1 or 2 handed entries.

7 HANDICAPS:

- 7.1 Club Handicap: All boats shall be handicapped on a corrected TCF by the handicap committee. This may be altered at any time.
- 7.2 Trailer Yachts when racing in their own divisions, series or regatta may be handicapped in accordance with the recognised NZTYA Ratings. The handicap committee may alter ratings in certain circumstances in consultation with, and with the approval of the Trailer Yacht Committee.
- 7.3 PHRF Scoring: Each boat competing under PHRF scoring events should present to the Club Secretary a copy of her current certificate at least 12 hours prior to her first race. Only boats with current certificates will receive a result.
- 7.4 It is the responsibility of all skippers entering in racing for the first time in a boat with no handicap to inform the handicap committee at least 48 hours prior to the race to enable a handicap and division to be assigned. Until a handicap is assigned a boat may be scored DNS.
- 7.5 Any alterations or additions to a boat or to her equipment that may affect that boat's performance, or any new or different sail carried aboard to that with which a boat gained her handicap must be notified to the handicap committee not less than 12 hours prior to entering any race for alteration of her handicap if necessary.

8 THE COURSES

- 8.1. **The harbour courses** are described in Attachments A & B. These descriptions include the order in which marks are to be passed, and the side on which each mark is to be left.
- 8.2 No later than the preparatory signal, the course number to be sailed (from Attachment B) for each division will be displayed from either the clubhouse tower or start boat.
- 8.3 The number of the proposed course for each division may be broadcast via VHF Channel 77 prior to the scheduled start time of the first start. This does not absolve competitors of their responsibility to respond to the Start Signals of the Race Officer.
- 8.4 **Other courses:** The courses to be sailed are as described in Attachment C.

9 THE START

- 9.1 The starting lines will be:
 - 9.1.1 **Clubhouse start line:** If a start line buoy has been laid, between that buoy and the centre of the clubhouse start box. If no start line buoy has been laid, the start line shall be between the centre of the clubhouse start box and Otumoetai A beacon.
 - 9.1.2 **Boat start is:** Between a staff on the start boat displaying an orange flag at the starboard end and a round red buoy at the port end. The start line may be between a staff on the start boat displaying an orange flag, and a mark designated by the race officer.

- 9.1.3 **A Beacon start** is: Between A Beacon at the port end and a start boat at the starboard end. The line is to be set at approximately 90 degrees to the first mark of the course and should not be more than approximately 100 metres in length. Alternatively, the A Beacon start may be a gate start.
- 9.1.4 **Mayor Island start** shall be a gate start.
- 9.2 **Races (except gate starts) will be started using the following signals:**
- 9.2.1 The visual signals for a boat start will be flags, excepting gate and A Beacon starts.
- 9.2.2 RRS Rule 26 is changed as follows:
 (A):The visual signals for a clubhouse start will be lights.
 (B): An A Beacon start or a gate start will only use sound signals and no visual signals.
- 9.2.3 In the event of a light failure, for a clubhouse start, the Divisional Boards *and* Course Numbers will be the visual signals.

| MINUTES | SIGNAL | SOUND | BOAT | | CLUBHOUSE TOWER | |
|---------|-------------|---------|---------------|---|-----------------|--|
| | | | DIVISION | VISUAL | DIVISION | VISUAL |
| 5 | Warning | 1 short | Div Flag up | | Div Board up | Yellow on |
| 4 | Preparatory | 1 short | | Preparatory flag up Course No. up | | Yellow off Blue on Course No. up |
| 1 | 1 minute | 1 long | | Preparatory flag down Course No down | | Blue off Course No down |
| 0 | Start | 1 short | Div Flag down | | Div Board down | Yellow on |

- 9.3 The warning signal for each succeeding division will be the starting signal of the preceding division.
- 9.4 For subsequent races on the same day the warning signal for the next race of each division will be as soon as practicable after the finish of the preceding race.
- 9.5 Boats whose warning signal has not been made shall avoid the starting area. A breach of this instruction may render a boat liable to a discretionary penalty.
- 9.6 A boat starting later than 15 minutes after her starting signal will be scored DNS (Did Not Start).
- 9.7 RRS Rule 42.1 is changed as follows: A boat may motor to the start line after her preparatory signal, and may use her motor to return to the start line. However, before starting or restarting, that boat must cease motoring before doing a 360 degree turn under sail alone, then having thus gained her racing status proceed to start as provided above.
- 9.8 RRS Rule 27.3 will be changed as follows: Outside races programmed to start at the Clubhouse may be started at A Beacon at the discretion of the Race Officer. Notification of an A beacon start and starting instructions may be given on VHF Channel 77.
- 9.9 A Beacon Start:
 (A) The boat carrying the Race Officer shall be the start boat if no other start boat is provided.
 (B) Boats starting after the start boat has left her station at A Beacon shall pass within 50 metres of A Beacon to port when the first leg of the course is to the west, or north, and to starboard when the first leg is to the east.
- 9.10 RRS Rules 29.1 and 29.2 will be changed as follows: For Clubhouse start line starts, the Race Officer whenever possible will use VHF Channel 77 to advise boats when there is either an Individual or General Recall. This does not absolve competitors of their responsibility to respond to the Start Signals of the Race Officer.
- 9.11. Where possible, the Race Officer shall endeavour to broadcast the race sound signals over VHF Channel 77.
- 9.12 **Gate Start:**
 (A)The start instructions will be given over VHF channel 77. The race officer shall designate the gate boat. In the absence of a designation by the race officer, the gate boat shall be the boat with the lowest handicap.
 (B) After the race officer has announced that the start period has commenced, the gate boat will commence sailing the course. The other contestants will start by passing behind the stern of the gate boat, and will be deemed to have started when their hulls have completely crossed the path of the gate boat after the start period has commenced.
 (C) For a period of 10 minutes after the start period has commenced:
 (i) All other contestants shall keep clear of the gate boat, irrespective of which tack or point of sail the gate boat is on.
 (ii) The gate boat will be an obstruction under the RRS
 (iii) The gate boat shall not tack or gybe.

10 CHANGE OF COURSE

- 10.1 RRS Rule 33 is changed as follows for courses from Attachment B:
The Race Officer may change the course by changing the next and/or any subsequent rounding mark and may change a rounding mark into a fairway mark. The race officer shall advise boats via VHF Channel 77 of the new mark(s) and the division(s) affected. The boats will round the new mark(s) as instructed, and comply with any instruction given regarding the channel to be used.

11 THE FINISH

- 11.1 **Clubhouse Finish:** The finishing line will be between the centre of the clubhouse start box and Otumoetai A Beacon.
For Outside races and Club Program Harbour races that finish at the Clubhouse, the Finishing Line will be the transit between the white flagstaff on the Clubhouse building and the black line on the roof of the Clubhouse above the Tower.
- 11.2 **Club house Finish: Taking own time:** If the race officer has advised boats by VHF channel 77 that the finish office is not manned, boats finishing after that announcement shall take their own times, and submit a finishing declaration as detailed in SI 12.
- 11.3 **Finish Boat:** The finishing line will be between a staff on the Finish Boat displaying an orange flag at the starboard end and the port end finishing mark.
- 11.4 **A Beacon Transit Finish:** The finishing line will be a transit line extending beyond A Beacon for a distance of 50 metres on a bearing at 90 degrees to the bearing from the previous mark (southern most point of Motiti Island, Mayor Island or Karewa Island, or a way point, as appropriate). A Beacon shall be taken to port when the previous mark was to the east and to starboard when the previous mark was to the north or west.
- 11.5 **Mayor Island Finish:** The finishing line will be between the light on the south eastern headland of Mayor Island (GPS point S 37.18.700, E176.15.500), and GPS point S37.18.634, E176.15.705..
- 11.6 **Whitianga Finish:** The finishing line is to be advised in a document (which may be an email or text) to be given to competitors before the start of the race.
- 11.7 **Abandoning a Race:** RRS Rule 32.1 will be changed as follows: When abandoning a race, competitors may be notified via VHF Channel 77.

12 FINISHING DECLARATIONS:

- 12.1 Finishing Declarations are compulsory for all races that go further than A Beacon and for Club Harbour Program races, unless the race finishes at the TYPBC Clubhouse AND a hooter sound is given to each finisher. If there is no hooter sound, a Declaration must be completed.
- 12.2 By 0900 hours the next working day, boats shall place in the Declaration Box a finishing declaration showing the information required in parts A- D below inclusive. Part E is requested but not compulsory.
- A. The name of the race.
 - B. The time, which must be taken from a GPS (specifying (NZST) New Zealand Standard Time or (NZSST) New Zealand Standard Summer Time where applicable), and date that the boat finished the race.
 - C. A declaration that the boat completed, or did not complete, the course in accordance with all the rules.
 - D. The boat's name and sail number and the signature of either the skipper or navigator.
 - E. The name of the boat immediately ahead and the name of the boat immediately behind at the finish and their approximate finish times.
- 12.3 In the case of races that do not finish at the clubhouse or A Beacon, it is up to the skipper of the boat to arrange for their declaration to be handed in on time.
- 12.4 Boats failing to comply with the finishing declaration instruction shall be treated as DNF.
- 12.5 The declaration box is the mailbox type box located at the TYPBC clubhouse.
- 12.6 Alternatively, if the race officer has advised competitors that they may make finishing declarations for any particular race by email, text message, or other form of communication, such form of finishing declaration will be acceptable as complying with the above requirements.

13 PENALTY SYSTEM

- 13.1 Trailer Yachts and Keelboats with retractable keels may retract their centreplate / keel to assist freeing themselves after running aground. If they do so, they must immediately sail to the nearest navigable water in a position not closer to the next mark than when the centreplate / keel was lifted, lower the centreplate / keel to the original position and complete a 360 degree turn under sail, then continue to race without further penalty.
- 13.2 In variation of RRS rule 42, a skipper may use an engine to extract a boat from an unsafe situation (e.g. stuck fast on a sandbar or in the path of a ship), then motor sail or sail to the nearest safe navigable water, in a position not closer to the next mark than when her engine was started and complete a 360 degree turn under sail, then continue to race without further penalty.
- 13.3 In variation of RRS 44.1, multihulls may take a one turn penalty when a boat may have broken one or more rules of part 2 in an incident while racing.

14 TIME LIMITS

- 14.1 **Wednesday Summer Series and Friday Fun series:** The time limit expires for each Division 2 hours after the start of that Division. Should one boat in a Division finish within that time, the time limit for that Division is extended by 30 minutes.
- 14.2 **Winter Series:** The time limit expires for each Division 3 hours after the start of that Division. If the course includes Karewa Island, the time limit is 4.5 hours. Should one boat in a Division finish within the time limit, the time limit for that Division is extended by 60 minutes.
- 14.3 **Women on Water:** The time limit expires at 2030 hours, except for race 9 which is 1700hours.
- 14.4 **Multihull Harbour Series:** 4.0 hours or 2030 hours, whichever is sooner.
- 14.5 **Short handed Series:** The time limit expires at 1800 hours. Should one boat finish within the time limit, the time limit for other boats is extended by 1 hour.
- 14.6 **There will be no time limit for the following series:**
 - Club Keeler Offshore Series
 - Steve's Marine Supplies Karewa Series
 - Club Keeler Bluewater Series

15 PROTESTS AND REQUESTS FOR REDRESS

- 15.1 Prior to leaving the area bounded by Tauranga Marina entrance and the Northern end of Sulphur Point container wharf, a boat intending to protest shall, in addition to the requirements of RRS 61.1 (a), inform the Race Officer by VHF Channel 77, of her intention to protest and the identity of the boat or boats protested against. The protesting boat should receive acknowledgement from the Race Officer.
- 15.2 Protest Forms are available at the clubhouse. Protests shall be handed to the race officer. They must be lodged within 1.5 hours in the case of harbour courses, or 4 hours in the case of outside races after the boat protesting has finished or retired from the race EXCEPT that these time limits may be extended on one or more of the following grounds
 - 15.2.1 That the race officer is not available to accept the protest within the time limit, provided however, that the protesting boat has made every effort to inform the race officer of her intention to protest, and has lodged her protest at the first reasonable opportunity.
 - 15.2.2 That the protesting boat finished racing an outside course between 1900 hours and 0700 hours the next day, in which case she shall have until 1100 hours the next morning (or that morning for a boat finishing after midnight) to lodge her protest...
- 15.3 Protest notices may be posted within 30 minutes of the protest time limit to inform competitors where and when there is a hearing in which they are parties to a protest or named as witnesses. These notices will be deemed to fulfil the requirements of RRS 63.2
- 15.4 Notices of protests by the race committee or protest committee will be posted to inform boats under RRS rule 61.1(b).
- 15.5 Boats shall keep clear of all shipping movements whilst in the Tauranga Harbour Limits. Failure to do so which results in an official complaint from the Harbourmaster may result in the disqualification of the boat from the race. Repeated infringements by a boat may result in a hearing under RRS 69.1.
- 15.6 Breaches of sailing instructions 1.5 and 17 will not be grounds for a protest by a boat under RRS rule 60.1(a). Penalties for these breaches may be less than disqualification if the protest committee so decides.
- 15.7 For protests where only a Rule of RRS Part 2 is alleged to have been broken, an arbitration hearing may be offered prior to any formal hearing.

16 SCORING

- 16.1 The Low Point Scoring System of Appendix A will apply. Series points will be scored as a series longer than a regatta, under RRS Appendix A, rule A 9.
- 16.2 The Notice of Race should state the number of races to constitute a series and the number of discardable races within the series. .

17 SAFETY REGULATIONS

17.1 Equipment :Keelers and trailer yachts.

Where not specified in attachment C for particular races:

Yachting NZ Category 5 Safety Standard for keelers & multihulls, and category C for trailer yachts are not required. However they remain a recommendation.

All competing Yachts must carry the following at all times:

A.

Bucket (at least 9 litre, stout construction)

Lifejackets for all crew

Lifebuoy

Emergency knife (easily accessed from the cockpit)

Anchor ready for immediate use, of appropriate size

First Aid kit

VHF radio (audible in cockpit)

B.

Flash light (waterproof)

Navigation lights

Fire extinguisher

A serviceable engine & propeller

Items in list B may be waived by the race committee in specific cases, following a request in advance

17.2 Equipment: Multihulls: and Other Boats.

Yachting NZ safety regulations, part 1 for Unballasted Centreboard & Open Yachts shall apply, unless otherwise specified in the relevant Notice of Race. Unballasted centreboard & Open yachts (including multihulls) shall also carry a waterproof VHF radio, and, if racing outside the harbour entrance, at least one orange smoke flare

- 17.3 All boats shall sign on before each race on a form provided at the TYPBC clubhouse or the Bridge Marina office for that purpose, except when the Notice of Race states otherwise. Failure to sign on shall not be grounds for protest.
- 17.4 A boat that retires from a race shall notify the Race Officer by VHF Channel 77 as soon as possible.
- 17.5 For all Outside Races, except Karewa races, all boats shall lodge a completed crew list (giving the crew name and emergency contact phone number) either with the Office of the TYPBC, or in the Crew List box provided adjacent to the sign on sheets prior to leaving the marina. Any changes to crew on board are to be notified to the Race Officer by VHF prior to the start of the race. Failure to comply may result in a boat being disqualified from the race.
- 17.6 For all Tower starts, the Race Officer may broadcast a time check over VHF channel 77, prior to the first Warning Signal.
- 17.7 The race officer may elect not to start any division in the event of adverse weather conditions, or because of other safety factors.

18 EQUIPMENT AND MEASUREMENT CHECKS

- 18.1 A boat or equipment may be inspected at any time for compliance with the relevant rules and sailing instructions. On the water, a boat can be instructed by the Club Safety Officer to proceed immediately to a designated area for inspection.

The Club Safety Officer may lodge a protest against any boat that is found not to comply with the relevant rules or these sailing instructions.

19 RADIO COMMUNICATION

- 19.1 All Boats shall maintain a listening watch on VHF Channel 77 (156.875 MHz) inside the harbour limits. At all other times boats shall maintain a listening watch on VHF Channel 16 and use VHF Channel 77 as a working channel.

20 DISCLAIMER OF LIABILITY

- 20.1 Competitors participate in all TYPBC races entirely at their own risk. See RRS 4, Decision to Race. The Organising Authority will not accept any liability for material damage or personal injury or death sustained in conjunction with or prior to, during or after a race.

ATTACHMENT A

REFERENCE Chart NZ 5412, Port of Tauranga (corrected).

Any beacon, stake, buoy, mark or Island may be used in courses.

Locations & abbreviations for commonly used rounding marks:

Town Reach Bridge marina 5 knot buoy (BM5)

Stella Passage 17

Maunganui Roads P7

Western Channel 3W, 10W, 12W, West Otumoetai (WOt)

Cutter Channel 5, 6.

Harbour Approach; A Beacon (A beac), C buoy (C).

STO Mark: Preferred Channel Mark at 37.38.427 South and 176.02.252 east,

Tilby Channel area: In Balance Mark (inB): A laid yellow buoy at approximately 37.38.987 South, 176.08.519 East

Te Puna: TP G at approximately 37.39.103 South and 176.03.412 East

Omokoroa: OMO D at approximately 37.37.480 South and 176.03.385 East

GPS Way Point Marks:

GPS 1: 37.33.000 South, 176.12.000 East.

GPS 2: 37.34.000 South, 176.06.500 East

GPS 3: 37.34.700 South, 176.16.600 East

GPS 4: 37.39.000 South, 176.14.500 East.

No actual mark will be laid on the GPS waypoint marks.

Bowentown Safe Water Mark: Red & White Buoy with red ball on top. Approx 37.28.105 South, 176.01.820 East. Approx .75nm off Matakana Island, and 1.5nm out from Bowentown entrance.

All marks except the fairway marks specified below, or by the race officer, shall be rounding marks.

Fairway marks –for all courses, including outside races. Boats shall pass on the required deep water side of the following marks:

These fairway marks are not rounding marks under racing rule 28.1(b).

Divisions 1-4

No. 3 (Banks) Buoy (except for division 4)

Otumoetai Channel: OtB, OtD,

Division 0 (multihulls)

No. 3 (Banks) Buoy

Channel definitions:

Otumoetai Channel: Boats shall observe fairway marks OtB, & OtD,

CAUTION: All boats should **TAKE CARE** to see there is adequate water on the course they intend to sail between rounding marks.

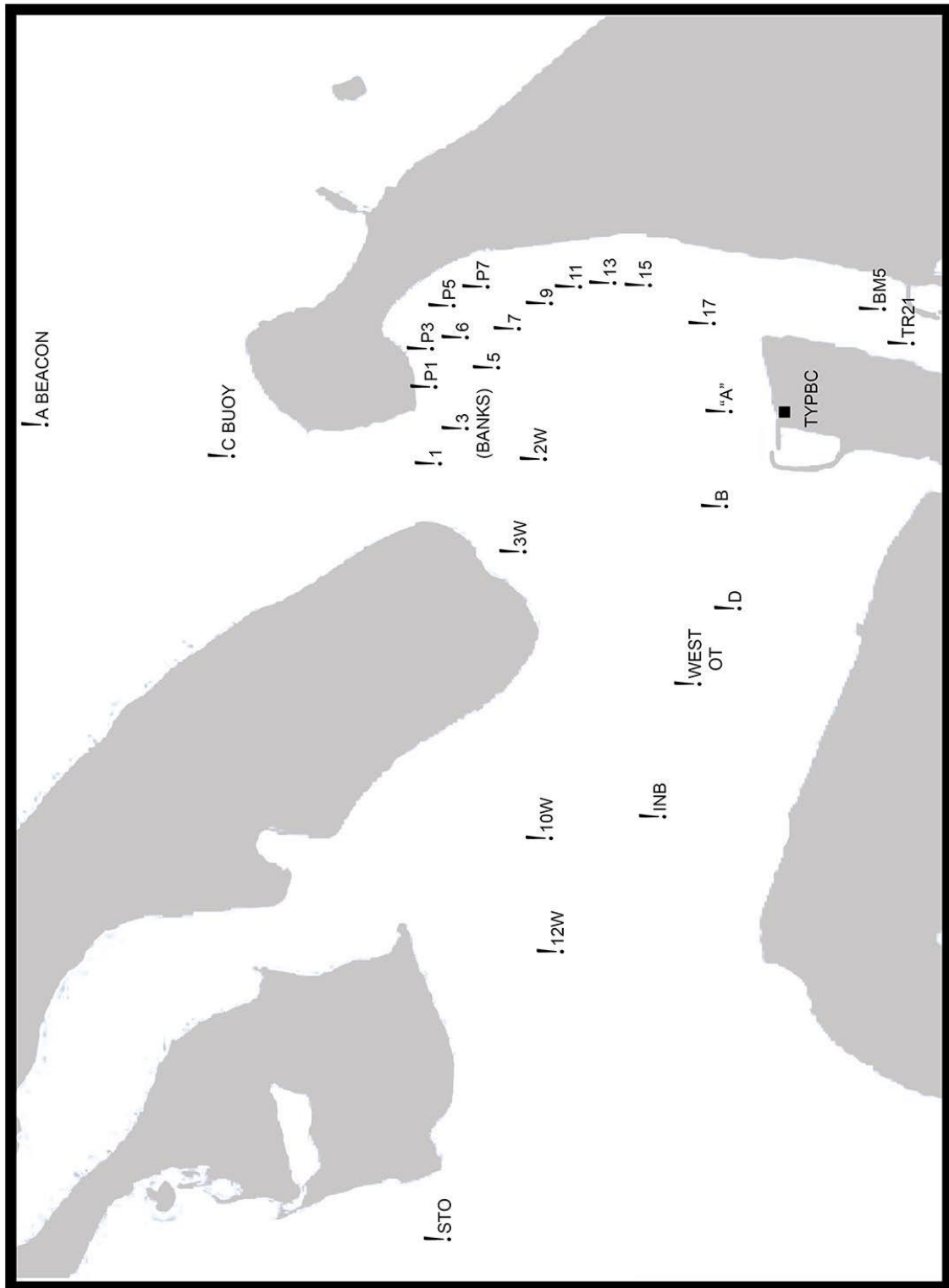
Code Flag Q (Yellow Flag)

When flag Q is displayed ashore in the case of a clubhouse start, (or from the Race Committee Boat, in the case of a committee boat start), then Substitute 5(P) for P7(P), and 5(S) for 6(S). This is to keep boats on the western side of the channel during shipping movements. The Race Officer may bring attention to this signal over VHF Radio channel 77.

CHART OF HARBOUR

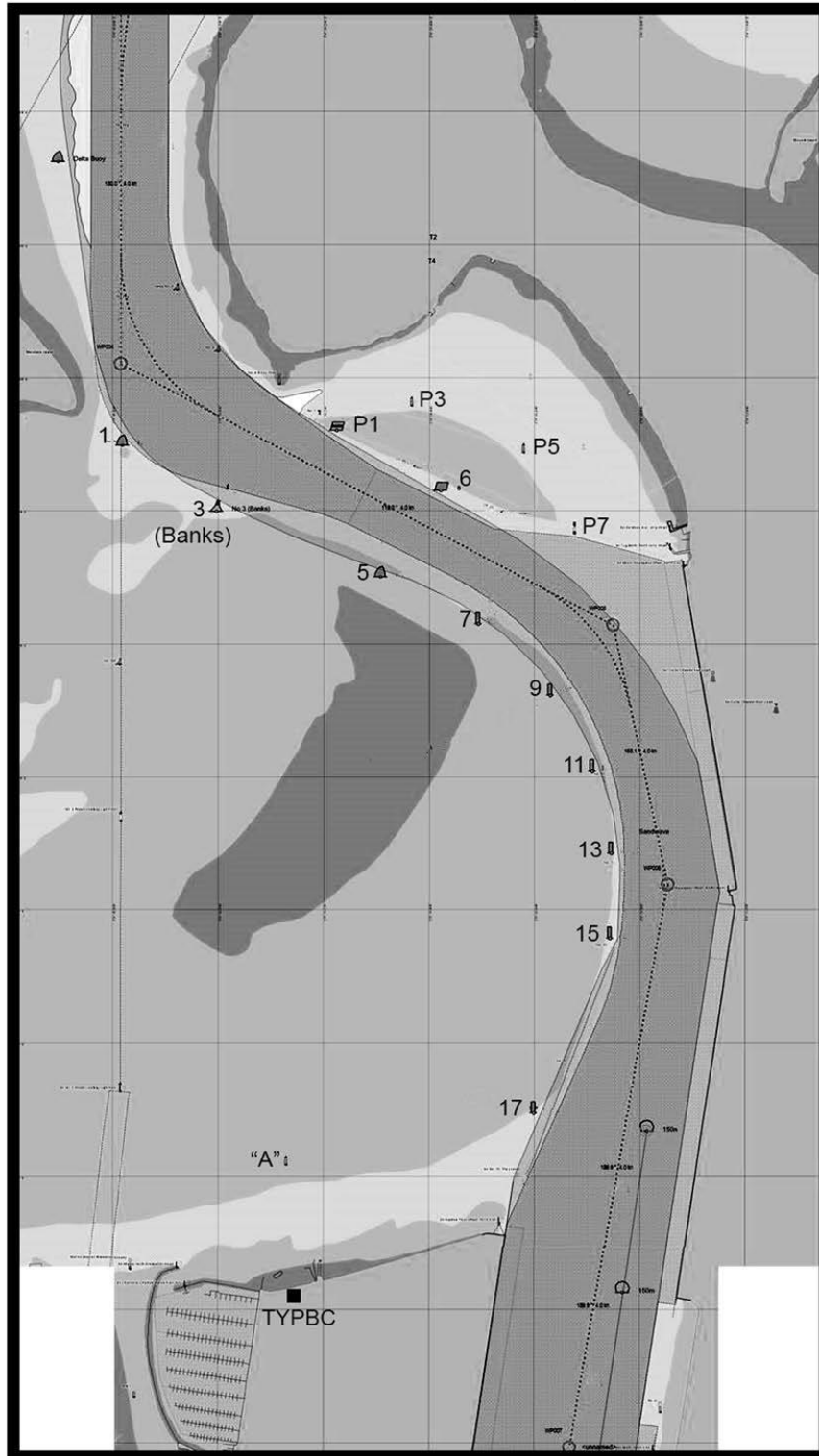
ATTACHMENT A (Harbour Course Racing Area)

Marks shown in approximate positions only.
NOT TO SCALE - Not for navigational purposes

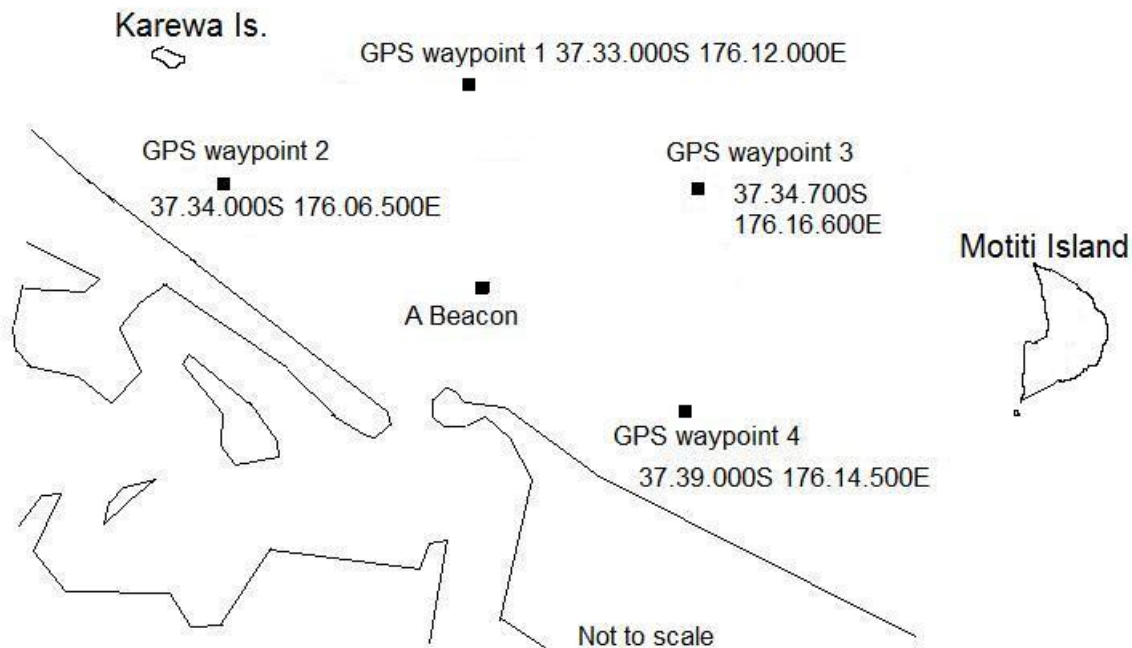


MARK NUMBERS FROM NOV 2016

Marks shown in approximate positions only.
NOT TO SCALE - Not for navigational purposes



GPS waypoint chart



Category 4+ Safety Requirements

All boats competing in Cat 4+ races which have not supplied TYPBC with a current Cat 3 certificate shall comply with the following safety regulations in addition to all Cat 4 requirements:

- Safety Harnesses (in accordance with Safety Reg 17.08a , to Cat 3 standard)
- Liferaft or dinghy (in accordance with Safety Reg 17.12a , to Cat 3 standard)
- Jackstays (in accordance with Safety Reg 17.23, to Cat 3 standard)
- VHF (in accordance with Safety Reg 18.2(i), to Cat 3 standard)
- Spare handheld VHF (in accordance with Safety Reg 18.2(ii), to Cat 3 standard)
- Epirb or PLB (in accordance with Safety Reg 18.6, to Cat 3 standard)

- Flares to meet Cat 3 requirements (in accordance with Safety Reg 18.7, to Cat 3 standard)
- GPS (in accordance with Safety Reg 19.04, to Cat 3 standard)
- All mainsails should be capable of being reefed (in accordance with Safety Reg 15.16, to Cat 3 standard).
- Also it is recommended that boats have a waterproof grab bag containing flare pack, waterproof floating torch, hand-held vhf, an epirb or PLB and a cellphone in a waterproof container.

Boats will be subject to random inspection by the Club Safety Officer or the safety officer's appointee.

Attachment B Harbour Courses

| | | | | | | | | | | | | Miles |
|---|---|---------|------------|------------|------------|------------|---------|--------------------------------|--------|---------|--------|-------|
| 1 | S | 17(p) | P7(p) | BM5 (p) | Finish | | | | | | | 3.7 |
| 2 | S | 17(p) | P7(p) | BM5 (p) | P7(p) | 17(s) | Finish | | | | | 5.9 |
| 3 | S | 17(p) | P7(p) | BM5 (p) | P7(p) | BM5 (p) | Finish | | | | | 6.9 |
| 4 | S | 17(p) | P7(p) | BM5 (p) | P7(p) | BM5 (p) | P7(p) | BM5 (p) | Finish | | | 10.1 |
| 5 | S | 17(p) | P7(p) | BM5 (p) | P7(p) | BM5 (p) | P7(p) | BM5 (p) | P7(p) | BM5 (p) | Finish | 13.3 |
| 6 | S | 17(p) | P7(p) | BM5 (p) | P7(p) | 10W(p) | 6(s) | 17(s) | Finish | | | 9.8 |
| 7 | S | 17(p) | P7(p) | BM5 (p) | P7(p) | 12W(p) | 6(s) | 17(s) | Finish | | | 10.6 |
| 8 | S | 17(p) | P7(p) | BM5 (p) | P7(p) | STO (p) | 6(s) | 17(s) | Finish | | | 12.8 |
| 9 | S | 17(p) | P7(p) | 10W(p) | 6(s) | 17(s) | Finish | | | | | 6.6 |
| 10 | S | 17(p) | P7(p) | W Ot (p) | Finish | | | | | | | 4 |
| 11 | S | 17(p) | P7(p) | 10W(p) | Finish | | | | | | | 5 |
| 12 | S | 17(p) | P7(p) | 12W(p) | 6(s) | 17(s) | Finish | | | | | 7.4 |
| 13 | S | 17(p) | P7(p) | 12W(p) | 10W (s) | Finish | | | | | | 6.1 |
| 14 | S | 17(p) | P7(p) | STO (p) | 6(s) | 17(s) | Finish | | | | | 9.1 |
| 15 | S | 17(p) | P7(p) | 12W(p) | 10W (p) | 12W(p) | 6(s) | 17(s) | Finish | | | 8.2 |
| 16 | S | 17(p) | P7(p) | 10W(p) | 3W(p) | 10W(p) | 6(s) | 17(s) | Finish | | | 9.2 |
| 17 | S | 17(p) | P7(p) | 12W(p) | 3W(p) | 12W(p) | 6(s) | 17(s) | Finish | | | 10.8 |
| 18 | S | 17(p) | P7(p) | STO (p) | 3W(p) | STO (p) | 6(s) | 17(s) | Finish | | | 15.5 |
| 19 | S | 17(p) | P7(p) | 10W(p) | 3W(p) | 10W(p) | 3W(p) | 10W(p) | 6(s) | 17(s) | Finish | 11.8 |
| 20 | S | 17(p) | P7(p) | 12W(p) | 3W(p) | 12W(p) | 3W(p) | 12W(p) | 6(s) | 17(s) | Finish | 15.6 |
| 21 | S | 17(p) | P7(p) | STO (p) | 3W(p) | STO (p) | 3W(p) | STO (p) | 6(s) | 17(s) | Finish | 21.3 |
| 22 | S | 17(p) | P7(p) | STO (p) | 10W(p) | 12W(p) | 6(s) | 17(s) | Finish | | | 10.4 |
| 23 | S | 17(p) | P7(p) | STO (p) | 10W(p) | STO (p) | 6(s) | 17(s) | Finish | | | 12.7 |
| 24 | S | 17(p) | P7(p) | 10W (p) | OtA (p) | 17(p) | P7(p) | BM5 (p) | Finish | | | 8.9 |
| 25 | S | 17(p) | P7(p) | 10W(p) | OtA (p) | 17(p) | P7(p) | 17(s) | Finish | | | 7.8 |
| 26 | S | 17(p) | P7(p) | STO (p) | 10W (s) | Finish | | | | | | 8 |
| 27 | S | 17(p) | P7(p) | 10W(p) | 3W(p) | inB (p) | Finish | | | | | 7.6 |
| 28 | S | 17(p) | P7(p) | 12W(p) | 3W(p) | 12W(p) | 10W (s) | Finish | | | | 9.2 |
| 29 | S | 17(p) | P7(p) | STO (p) | 3W(p) | STO (p) | 10W (s) | Finish | | | | 13.8 |
| 30 | S | 17(p) | P7(p) | A Beac.(p) | 17(s) | Finish | | | | | | 8.7 |
| 31 | S | 17(p) | P7(p) | A Beac.(p) | BM5 (p) | Finish | | | | | | 9.7 |
| 32 | S | 17(p) | P7(p) | A Beac.(p) | BM5 (p) | P7(p) | 17(s) | Finish | | | | 11.9 |
| 33 | S | 17(p) | P7(p) | A Beac.(p) | BM5 (p) | P7(p) | BM5 (p) | P7(p) | 17(s) | Finish | | 15.1 |
| 34 | S | 17(p) | P7(p) | A Beac.(p) | 10W(p) | 6(s) | 17(s) | Finish | | | | 11.6 |
| 35 | S | 17(p) | P7(p) | A Beac.(p) | 12W(p) | 6(s) | 17(s) | Finish | | | | 12.4 |
| 36 | S | 17(p) | P7(p) | A Beac.(p) | STO (p) | 6(s) | 17(s) | Finish | | | | 14.8 |
| 37 | S | 17(p) | P7(p) | A Beac.(p) | STO (p) | 3W(p) | STO (p) | 6(s) | 17(s) | Finish | | 20.6 |
| 38 | S | 17(p) | P7(p) | 10W(p) | TP G(p) | 10W(s) | 6(s) | 17(s) | Finish | | | 14.5 |
| 39 | S | 17(p) | P7(p) | 10W(p) | TP G(p) | 10W(s) | Finish | | | | | 13 |
| 40 | S | 17(p) | P7(p) | 10W(p) | 6(s) | 17(s) | P7(p) | 10W(p) | 6(s) | 17(s) | Finish | 12.5 |
| 41 | S | 17(p) | P7(p) | A Beac.(p) | C Buoy (p) | A Beac.(p) | 17(s) | Finish | | | | 11.9 |
| 42 | S | 17(p) | A Beac.(p) | Karewa(s) | A Beac.(s) | 17(s) | Finish | | | | | 16 |
| 43 | S | 17(p) | A Beac.(p) | GPSWP(p) | Karewa (p) | A Beac (s) | 17(s) | Finish | | | | |
| 44 | S | 17(p) | A Beac.(p) | Karewa(s) | GPSWP(s) | A Beac.(s) | 17(s) | Finish | | | | |
| 45 | S | 17(p) | P7(p) | TP G(s) | OMO D(s) | 10W(s) | Finish | (Motuhoa Island (s) see note 1 | | | | |
| 46 | S | 17(p) | P7(p) | OMO D(p) | TP G(p) | 10W(s) | Finish | (Motuhoa Island (p) see note 1 | | | | |
| Courses 45 and 46, Observe all channel marks from 10W, back to and including 10W | | | | | | | | | | | | |
| 47 | S | BM5 (p) | P7(p) | 17(s) | Finish | | | | | | | 4 |
| 48 | S | BM5 (p) | P7(p) | BM5 (p) | Finish | | | | | | | 5.7 |
| 49 | S | BM5 (p) | P7(p) | BM5 (p) | P7(p) | 17(s) | Finish | | | | | 7.2 |
| 50 | S | BM5 (p) | P7(p) | BM5 (p) | P7(p) | BM5 (p) | Finish | | | | | 9.2 |

| | | | | | | | | | | | | |
|------------------------------------|---|----------|------------|----------|---------|---------|---------|---------|--------|---------|--------|------|
| 51 | S | BM5 (p) | P7(p) | BM5 (p) | P7(p) | BM5 (p) | P7(p) | 17(s) | Finish | | | 10.4 |
| 52 | S | BM5 (p) | P7(p) | BM5 (p) | P7(p) | BM5 (p) | P7(p) | BM5 (p) | P7(p) | 17(s) | F | 14.8 |
| 53 | S | BM5 (p) | P7(p) | 10W(p) | 6(s) | BM5 (p) | Finish | | | | | 8.9 |
| 54 | S | BM5 (p) | P7(p) | 12W(p) | 6(s) | BM5 (p) | Finish | | | | | 9.7 |
| 55 | S | BM5 (p) | P7(p) | STO (p) | 6(s) | BM5 (p) | Finish | | | | | 12 |
| 56 | S | W.Ot (s) | 3W(p) | 10W(p) | 6 (s) | 17(s) | Finish | | | | | 6.5 |
| 57 | S | W.Ot (s) | 3W(p) | 10W(p) | 3W(p) | 10W(p) | 6 (s) | 17(s) | Finish | | | 9.1 |
| 58 | S | W.Ot (s) | 3W(p) | STO (p) | 3W(p) | 10W(p) | 6 (s) | 17(s) | Finish | | | 12.3 |
| 59 | S | W.Ot (s) | A Beac.(p) | 17(s) | Finish | | | | | | | 9.2 |
| 60 | S | W.Ot (s) | A Beac.(p) | 12W(p) | 6 (s) | 17(s) | Finish | | | | | 12.9 |
| 61 | S | W.Ot (s) | 6(s) | 17(s) | Finish | | | | | | | 3.3 |
| 62 | S | 10W(s) | 6(s) | 17(s) | Finish | | | | | | | 5 |
| 63 | S | 10W(p) | Finish | | | | | | | | | 3.5 |
| 64 | S | 10W(p) | 12W(p) | 6(s) | 17(s) | Finish | | | | | | 5.7 |
| 65 | S | 10W(p) | 12W(p) | Finish | | | | | | | | 4.3 |
| 66 | S | 10W(p) | STO (p) | 10W (s) | 6(s) | 17(s) | Finish | | | | | 8.1 |
| 67 | S | 10W(p) | STO (p) | 10W(s) | Finish | | | | | | | 6.8 |
| 68 | S | W Ot (s) | 3W(p) | 10W(p) | 6(s) | 17(s) | Finish | | | | | 6.6 |
| 69 | S | 10W(p) | 12W(p) | 3W(p) | 12W(p) | 6(s) | 17(s) | Finish | | | | 9.1 |
| 70 | S | 10W(p) | STO (p) | 10W(p) | 12W(p) | 6(s) | 17(s) | Finish | | | | 8.8 |
| 71 | S | 10W(p) | STO (p) | 10W(p) | STO (p) | 6(s) | 17(s) | Finish | | | | 11.1 |
| 72 | S | 10W(p) | STO (p) | 3W(p) | STO (p) | 6(s) | 17(s) | Finish | | | | 13.9 |
| 73 | S | 17(p) | P7(p) | inB (p) | 6(s) | 17(s) | Finish | | | | | 6.6 |
| 74 | S | 17(p) | P7(p) | inB (p) | 3W(p) | inB (p) | 6(s) | 17(s) | Finish | | | 9 |
| 75 | S | 17(p) | P7(p) | inB (p) | 3W(p) | inB (p) | 3W(p) | inB (p) | 6(s) | 17(s) | Finish | 11.4 |
| 76 | S | 17(p) | P7(p) | inB (p) | Finish | | | | | | | 4.7 |
| 77 | S | 17(p) | P7(p) | inB (p) | 3W(p) | inB (p) | Finish | | | | | 7.1 |
| 78 | S | 17(p) | P7(p) | inB (p) | 3W(p) | inB (p) | 3W(p) | inB (p) | Finish | | | 9.5 |
| 79 | S | 17(p) | P7(p) | inB (p) | 3W(p) | inB (p) | 3W(p) | inB (p) | 3W(p) | inB (p) | Finish | 11.9 |
| 80 | S | inB (p) | Finish | | | | | | | | | 3.2 |
| 81 | S | W Ot (s) | 3W(p) | W Ot (p) | Finish | | | | | | | 3.9 |
| 82 | S | W Ot (s) | 3W(p) | 10W(p) | Finish | | | | | | | 4.9 |
| 83 | S | W Ot (s) | 3W(p) | inB (p) | 3W(p) | inB (p) | Finish | | | | | 7.5 |
| 84 | S | BM5 (p) | 10W(p) | 12W(p) | 10W(p) | 12W(p) | 10W (s) | Finish | | | | 7.4 |
| 85 | S | BM5 (p) | 10W(p) | STO (p) | 10W (s) | Finish | | | | | | 8.5 |
| 86 | S | BM5 (p) | W Ot (s) | 3W (p) | 10W(p) | 3W(p) | 12W (p) | 10W (s) | Finish | | | 10.3 |
| 87 | S | 17(p) | P7(p) | 12W (p) | 10W(p) | 12W (p) | 10W(s) | 17(s) | Finish | | | 8 |
| 88 | S | 17(p) | P7(p) | inB (p) | 3W(p) | 12W(p) | 3W(p) | inB (p) | Finish | | | 11.2 |
| 89 | S | BM5 (p) | P7(p) | inB (p) | 17 (p) | P7(p) | 17(s) | Finish | | | | 8.7 |
| 90 | S | BM5 (p) | P7(p) | inB (p) | 17 (p) | P7(p) | BM5 (p) | Finish | | | | 9.8 |
| 91 | S | 17(p) | P7(p) | BM5 (p) | inB (s) | 3W (p) | 12W(p) | 10W (s) | 17(s) | Finish | | 11.6 |
| Committee Boat Starts Only: | | | | | | | | | | | | |
| 92 | S | inB (p) | 6(s) | 17(s) | Finish | | | | | | | 4.7 |
| 93 | S | inB (p) | 3W(p) | inB (p) | 6(s) | 17(s) | Finish | | | | | 7.1 |
| 94 | S | inB (p) | 3W(p) | inB (p) | 3W(p) | inB (p) | 6(s) | 17(s) | Finish | | | 9.5 |
| 95 | S | inB (p) | 3W(p) | inB (p) | 3W(p) | inB (p) | 3W(p) | inB (p) | 6(s) | 17(s) | Finish | 11.9 |

Division Zero (Multihull) change: If 17 is the first mark after a boat start, it need not be observed.

"BM5" is the 5 knot buoy adjacent to the Bridge Marina Travel lift

KEELER DIVISION TROPHY LIST

| | | |
|---|--------------------------------|---|
| Gold Cup | Gold Cup Race | Club Handicap |
| Galatea Cup | Auckland/Tauranga | Line Honours (Tga Boats) |
| Clench Trophy | Karewa Motiti Series | Division 1: Club Hcp |
| Boy & Oar | Karewa Motiti Series | Division 2: Club Hcp |
| Burnsco Bell | Karewa Motiti Series | Multihulls: Club Hcp |
| Lawlink Trophy | Two Handed Series | Club Hcp |
| W A Wilkinson Cup | Schooner Rock/Karewa Series | Club Hcp |
| Percy Carter Salver | Tauranga/Mercury Cove | Cruising Division |
| Frank Lysaght Memorial | Tauranga/Mercury Cove | Club Hcp |
| Turner Fruit Bowl | Windward/Leeward Series | Club Hcp |
| Lloyd Silver Salver | Slipper/Mayor Race | Club Hcp |
| Capt. George Carey Memorial | Tauranga/Whitianga Race | Club Hcp |
| Duff's Whisky | Tauranga/Whitianga Race | PHRF |
| Trail Trophy | Single Handed Race | Club Hcp |
| G A Walsh Trophy | White Island Race | Club Hcp |
| Randle Cup | A Beacon/Mayor Island Race | 1 st Division 1 Boat: Club Hcp |
| G Hewitt Memorial | A Beacon/Mayor Island Race | 1 st Division 2 Boat: Club Hcp |
| Multihull Plaque | A Beacon/Mayor Island Race | Multihull: Club Hcp |
| Mike Garner Memorial | Karewa | Club Hcp |
| Doherty Points Globe | Top PHRF Points for season | PHRF |
| Wilson Line Honours Trophy | Most Line Honours for Season | Line Honours |
| J & J Hewitt Cup | Top Division 2 Boat for Season | Club Hcp |
| Helen C Cup | Centreboard/Keeler Race | Club Hcp |
| Clench Yacht | Women's Race | Club Hcp |
| Signs of Life Trophy | Women's Race | Club Hcp |
| Bayline Coaches Two Handed (Male/Female entry) | Friday Night Two Handed Series | Club Hcp Keelers |
| Steve's Marine Supplies Trophy | Karewa Series | Club Hcp |
| Brake Service Centre | Winter Series | Division 1: Club Hcp |
| Brake Service Centre | Winter Series | Division 2: Club Hcp |
| Brake Service Centre | Winter Series | Multihull Division: Club Hcp |

ATTACHMENT C Keeler, Trailer Yacht & Multihull Harbour, Inshore & Offshore Races

All Boats shall observe the fairway marks specified in Attachment A. Numbered courses refer to Attachment B.

| Day | Date | Start | Race | Handicap | Safety | Trophy |
|---------|-------------------|-------|--|---------------|---------|--|
| Sun | 17 Sep | 1300 | Opening Day Race & Multihull Series 1 Harbour Course; Attachment B | Club | TYPBC | MH Series 1 Inshore Series 1 |
| Sat | 23 Sept | 0900 | A Beacon-Mayor Island race | Club, PHRF | Cat 4 + | Inshore series 2 |
| Sat | 23 Sept | TBA | Mayor island-A Beacon race | Club, PHRF | Cat4+ | Inshore series 3 |
| Sat | 30 Sept | 1000 | Short Handed series 1 | Club | TYPBC | Short handed series 1 |
| Sun | 22 Oct | 1300 | Karewa Series race 1 Course 42, 43 or 44. | Club PHRF | TYPBC | Steves Marine Trophy 1. |
| Sun | 29 Oct | 1300 | MH Series 2 | Club | TYPBC | MH series 2. |
| Sat | 11 Nov | TBA | Matakana Classic. MH Series 3 | Club | | MH Series 4 |
| Sun | 12 Nov | 1100 | Windward-Leeward Race Series Separate race instructions to be issued. | Club | TYPBC | |
| Sat | 18 Nov | 1000 | Short Handed Series 2. | Club PHRF | TYPBC | Short handed Series 2 |
| Sat | 2 Dec | 1300 | Karewa Single Handed race | Club PHRF | TYPBC | |
| Sat | 16 Dec | 1000 | White Island Race | Club PHRF | Cat 3 | Blue Water Series 1 |
| Wed | 20 Dec | 1800 | Multihull Christmas Race Multihull Series 4 | Club | | MH Series 4 |
| Sat | 13 Jan | 1000 | Short Handed Series 3 | Club | TYPBC | Short handed series 3 |
| Sat | 27 Jan | 0800 | Tauranga- Whitianga Race. Offshore Series 2. Clubhouse Start, 17(P), A beacon (P), Whitianga finish | Club, PHRF | Cat 4+ | Blue Water Series 2 |
| Sat | 3 Feb | 1400 | Auckland-Tauranga Race | PHRF | Cat 3 | Numerous Trophies. Bluewater series 3 MH series 5 |
| Sun | 11 Feb | TBA | Motuhoa Race, Multihull Series 5 | Club | TYPBC | |
| Sun | 18 Feb | 1000 | Mike Garner Memorial & Karewa Series Race 3. Clubhouse start, 17(P), A Beacon (P), Karewa Is (S), A Beacon (S), STO (P), C4(S), 17(S), Finish. | Club | TYPBC | Steve's Marine Trophy 3 Mike Garner Memorial Trophy Inshore series 4 |
| Sun | 18 Feb | 1200 | MH Papamoa Race. Multihull Series 6 | Club | | MH Series 6 |
| Sat | 3 March | 1000 | Gold Cup. Course TBA | Club PHRF | Cat 3 | Gold Cup. Blue Water Series 4 |
| Fri-Sun | 9-11 March | 1400 | MH Matakana Raid | Club | TYPBC | Putan Trophy |
| Sat | 10 Mar | 1000 | Gold Cup reserve day | Club PHRF | | |
| Sat | 17 Mar | | Short Handed series 4 | Club | TYPBC | Short handed Series 4 |
| Fri | 30 Mar | 0800 | Tauranga-Cuvier-Great Mercury race | Club, PHRF | Cat 3 | Blue Water Series 5 |
| Sat-Mon | 31 Mar-2 April | | TYPBC Easter at Great Mercury | Club | TYPBC | |
| Sun | 15 Apr | 1200 | CLOSING DAY Karewa Race 4, & Multihull Series 7. | Club | TYPBC | Steve's Marine Trophy 4 , Inshore series 5, MH series 7. |

2017 – 2018 SUMMER WEDNESDAY SERIES

The Organising Authority is Tauranga Yacht and Power Boat Club Inc., PO Box 14352, Tauranga
Telephone (07) 578 5512 Fax (07) 578 5595

NOTICE OF RACE

1.0 Rules

1.1 The racing will be governed by the Racing Rules of Sailing, as specified in the General Sailing Instructions (RRS).

1.2 Safety: as per general sailing instructions.

1.3 Changes to the Racing Rules

The RRS will be changed in accordance with RRS 86 as specified in the general sailing instructions.

2 Eligibility and Entry

2.1 The race series is open to all boats approved by the race committee. The race committee will have a division for boats not using extra sails if entry numbers are sufficient.

2.2 Entries will be accepted by completing the entry form available at the TYPBC office. For skippers who are TYPBC members, the fee shall be \$50.00 for each series or \$90.00 for the whole of the Summer Series, with a discount (applicable to the whole Summer Series fee only) of \$10.00 for those who pay on, or before, the day of the first race of the series. For skippers who are not TYPBC members, the fee shall be \$100 for each series or \$180 for the whole of the summer series. All fees shall be paid before the boat enters the race area, or the boat may be scored as DNS.

2.3 Entry to each series after the 3rd race of that series will be considered as a late entry, and will be accepted only at the Race Committee's discretion.

2.4 Measurement is not required. However safety inspections may be undertaken.

2.5 To be eligible to compete in this event the skipper shall be a member of a club affiliated to the National Authority.

3 Schedule of Events

3.1 Racing Schedule:

The scheduled time of the warning signal for the first division will be 1755 hours on each race day.

The succeeding divisions will start as per Sailing Instruction 5.3 and 5.4.

The dates of the races for each series are:

Series One: 2016

| | | | | | |
|---------|--------------|---------|-------------|---------|-------------|
| Race 1 | 27 September | Race 2 | 4 October | Race 3 | 11 October |
| Race 4 | 18 October | Race 5 | 25 October | Race 6 | 1 November |
| Race 7 | 8 November | Race 8 | 15 November | Race 9 | 22 November |
| Race 10 | 29 November | Race 11 | 6 December | Race 12 | 13 December |

Series Two: 2017

| | | | | | |
|---------|-------------|---------|-------------|---------|-------------|
| Race 13 | 17 January | Race 14 | 24 January | Race 15 | 7 February |
| Race 16 | 14 February | Race 17 | 21 February | Race 18 | 28 February |
| Race 19 | 7 March | Race 20 | 14 March | Race 21 | 21 March |
| Race 22 | 28 March | | | | |

4 Sailing Instructions

The Sailing Instructions will be the Club General Sailing Instructions. They are in this booklet, and also available from the TYPBC office.

5. Scoring

5.1 The Low-Points Scoring System of RRS Appendix A will apply.

5.2 In the event that one or more boats in the relevant division has finished within the time limit for that race, and other boats have not finished within the extended time limit for that race, then boats still racing at the expiry of the extended time limit shall be scored points for the finishing place one more than the number of boats that have finished that race.

5.3 Three races will be required to be completed to constitute a series.

5.4 12 races are scheduled for Series One and 10 races are scheduled for Series Two. If 6 or more races have been completed in the relevant series, the worst score shall be excluded. If 8 or more races have been completed in the series, the boat's 2 worst scores in that series shall be excluded.

5.5 The final result for the season will be calculated based on all races completed. If less than 17 races are completed, the boat's 3 worst scores shall be excluded. If 17 or more races are completed, the boat's 4 worst scores shall be excluded.

6 Time Limit:

See general sailing instructions

MILLS REEF

WINERY | RESTAURANT

WOMEN ON WATER (WOW) SERIES

The organising authority is Tauranga Yacht and Power Boat Club Inc.,
PO Box 14352, Tauranga Mail Centre, Tauranga 3143
Telephone (07) 578 5512

NOTICE OF RACE

1 Rules

1.1 The racing will be governed by the Racing Rules of Sailing, as specified in the general sailing Instructions (RRS)

1.2 Safety: see general sailing instructions.

1.4 Special Rules

1.4.1 WOW Series – **Cruising Division**. Only one male shall be allowed on trailer yachts. Keelers may have two males on board. The race shall be a no extras race, as defined in the general sailing instructions, except that the race officer may permit extras to be used if conditions warrant. If extras are permitted, the race officer shall display flag H, and may bring attention to this on VHF channel 77.

1.4.2 Women's Series – **Racing Division**. Males must not give any physical assistance from 5 minutes before the boat's allocated start time, until the boat crosses the finish line. The male is on the boat in an advisory capacity only and minimal tactical advice is to be given unless he feels the boat or crew are in any kind of danger. Only one male shall be allowed on board boats less than 10 metres long.

Boats 10 metres and over may have two males on board.

2.0 Changes to Racing Rules

The RRS will be changed under rule 86, as specified in the general sailing instructions.

3.0 Eligibility and Entry

3.1 The series is open to teams approved by the WOW Committee.

3.2 Entries will be accepted by completing the entry form available at the TYPBC office or by requesting one from the WOW Committee – wow.tauranga@gmail.com. There will be a \$40 entry fee for the Racing Division of this series. The entry form is to be forwarded to the Club Secretary at the TYPBC office or handed to a WOW Committee member on the first night of WOW racing.

3.3 Entry to the series after the 3rd race will be considered as a late entry, and will be accepted only at the WOW Committee's discretion.

3.4 Measurement is not required; however safety inspections may be undertaken.

3.5 To be eligible to compete in this event the entrant shall be a member of a club affiliated to the National Authority.

3.6 Start times for the WOW Series will be given by the Race Officer by radio once a boat has provided the final person on board (POB) count.

4 Schedule of Events

4.1 **Registration:** All boats must sign on for each race at least 25 minutes before the warning signal **by either completing the form provided at the TYPBC clubhouse or, if located at the Bridge Marina, by radioing the race officer.**

The start line for all divisions will be the clubhouse start line.

The start shall be a Mark Foy start, with starting times specified by the race officer. Individual recalls will be signalled by VHF, and no visual signal is required.

4.2 Except for race 9, the scheduled time of the warning signal for the first boat to start in the race will be 1755 hours on each race day. Other boats will follow at their start time as provided by the race officer by radio. The start hooter will sound at one minute intervals, with the starter giving the time at intervals approximately every 5 minutes on VHF Channel 77.

The dates of the races are:

| | | | | | |
|--------|-------------|--------|-------------|---------|-----------------|
| Race 1 | 19 October | Race 2 | 2 November | Race 3 | 16 November |
| Race 4 | 30 November | Race 5 | 14 December | Race 6 | 1 February |
| Race 7 | 15 February | Race 8 | 1 March | Race 9: | Sunday 25 March |

5 Sailing Instructions

5.1 The Sailing Instructions will be the Club General Sailing Instructions. These are printed in this booklet and also available from the TYPBC office.

6 Scoring

6.1 The Low-Points Scoring System of Appendix A will apply.

6.2 In the event that one or more boats in the relevant division has finished within the time limit for that race, and other boats have not finished within the extended time limit for that race, then boats still racing at the expiry of the extended time limit shall be scored points for the finishing place one more than the number of boats that have finished that race.

6.2 3 races are required to be completed to constitute a series.

A total of 9 races are scheduled for the series. The **worst** result will be discarded if 6 or more races are completed

7 Time Limit:

See General Sailing Instructions

FRIDAY NIGHT FUN RACES

The Organising Authority is Tauranga Yacht and Power Boat Club Inc., PO Box 14352, Tauranga
Telephone (07) 578 5512 Fax (07) 578 5595

NOTICE OF RACE

1 Rules

1.1 The sailing will be governed by the Racing Rules of Sailing (RRS), as specified in the general sailing instructions

1.2 Safety: As per General Sailing Instructions.

1.3 All races shall be **no extras races** as defined in the general sailing instructions, except that when the race officer elects, and so advises participants, multihulls may use extras.

2. Changes to Racing Rules

The racing rules will be changed under RRS rule 86, as specified in the general sailing instructions.

3 Eligibility and Entry

3.1 The races are open to all boats approved by the race committee and may be handled in divisions as per Sailing Instruction 6.1.

3.2 Entries will be accepted by completing the entry form available at the TYPBC office. There will be no entry fee for this series for members of TYPBC. Non members of TYPBC shall pay an entry fee of \$20 per race. The entry form is to be forwarded to the Club Secretary at the TYPBC office before the boat enters the race area, or the boat may not be classed as a starter.

3.3 Measurement is not required. However safety inspections may be undertaken.

3.4 To be eligible to compete in this event a skipper shall be a member of a club affiliated to the National Authority.

3.5 All boats must sign on for each race before 1745 hours on the day of the race by either completing the form provided at the clubhouse, or the bridge marina office. As an alternative, the race officer may accept a sign on by VHF, but every effort should be made to sign on in writing. Sign ons should provide the name and sail number of the boat.

4 Schedule of Events

4.1 Racing Schedule:

The start line for all divisions will be the clubhouse starting line.

The scheduled time of the warning signal for the first division/s will be 1755 hours on each race day.

The succeeding divisions will start as per Sailing Instruction 5.3 and 5.4.

The dates of the races are:

| | | | | | | |
|-----|--------|-------------|--------|-------------|--------|-------------|
| 4.2 | Race 1 | 27 October | Race 2 | 10 November | Race 3 | 24 November |
| | Race 4 | 8 December | Race 5 | 25 January | Race 6 | 9 February |
| | Race 7 | 23 February | Race 8 | 9 March | Race 9 | 23 March |

5 Sailing Instructions

5.1 The Sailing Instructions will be the Club general Sailing Instructions. These are in this booklet and also available from the TYPBC office.

6 Scoring

6.1 The Low-Points Scoring System of Appendix A will apply.

KEELER BLUEWATER SERIES

The Organising Authority is Tauranga Yacht and Power Boat Club Inc., PO Box 14352, Tauranga
Telephone (07) 578 5512 Fax (07) 578 5595

NOTICE OF RACE

1 Rules

The racing will be governed by the Racing Rules of Sailing as specified in the general sailing instructions .

The YNZ Safety Regulations Part II Category 3 (Keelers & Multihulls) shall apply to the Auckland-Tauranga race, the White Island Race, the Gold Cup, and the Cuvier-Great Mercury race. The Tauranga-Whitianga race shall be category 4+, as shown in attachment C.

2. Changes to Racing Rules

2.1 The Racing Rules will be changed in accordance with RRS 86, as specified in the general sailing instructions.

3 Eligibility and Entry

3.1 The races are open to all boats approved by the race committee.

Except as specified in individual Notices of race, there is no entry fee for TYPBC members. Non member entry fee is \$20 per race.. Measurement is not required. However safety inspections may be undertaken.

3.2 To be eligible to compete in these events the skipper shall be a member of a club affiliated to the National Authority.

3.3 All boats must sign on before each race by logging on by VHF Channel 77, advising the race officer of the sail number, boat name, and number of persons on board. .

3.4 All boats shall lodge a completed crew list (giving the crew name, address and emergency contact phone number) either with the Office of the TYPBC, or in the Crew List box provided adjacent to the sign on sheets, Any changes to crew on board are to be notified to the Race Officer by VHF prior to the start of the race. Failure to comply may result in a boat being disqualified from the race.

4. Schedule of Events:

The scheduled time of the warning signal will be 5 minutes before the start time as stated in Attachment C

| | | | |
|----------|-------------|------------|-----------------------------------|
| Saturday | 16 December | 1000 hours | White Island Race |
| Saturday | 27 January | 0800 hours | Whitianga Race |
| Saturday | 3 February | 1400 hours | Auckland- Tauranga race |
| Saturday | 3 March | 1000 | Gold Cup |
| Friday | 30 March | 0800 | Tauranga-Cuvier-Mercury Cove race |

4.1 The sailing instructions, except for the Auckland – Tauranga race will be the Club General Sailing Instructions. These are printed in this booklet and also available from the TYPBC office.

5 Courses to be sailed

5.1 The courses will be as specified in specific course instructions for each individual race.

5.2 There are no time limits.

6 Scoring

6.1 The Low-Points Scoring System of Appendix A will apply.

Each race has an individual result.

Series score: If 3 or more races are completed, the worst score shall be excluded

Handicap rules: The series will be scored using Club Handicap and PHRF for all races except the Auckland- Tauranga race, which shall be scored on PHRF.

6.2 If sufficient entries are received sailing short handed, results shall also be scored for an additional short handed division. Boats sailed short handed are also to be scored in all other relevant results

STEVE'S MARINE SUPPLIES KAREWA SERIES

The Organising Authority is Tauranga Yacht and Power Boat Club Inc., PO Box 14352, Tauranga
Telephone (07) 578 5512 Fax (07) 578 5595

This series is proudly sponsored by:

Steve's **MARINE SUPPLIES**

NOTICE OF RACE

1.0 Rules

- 1.1 The racing will be governed by the Racing Rules of Sailing as specified in the Club general sailing instructions.
- 1.2 Safety: see General Sailing Instructions. .
- 1.3 For courses incorporating a GPS way point mark, boats shall carry an operating fixed or handheld GPS unit.

2.0 Changes to Racing Rules

- 2.1 The Racing Rules will be changed in accordance with RRS rule 86, as specified in the General Sailing Instructions.

3.0 Eligibility and Entry

- 3.1 The race series is open to all boats approved by the race committee and includes the divisions as per the general sailing Instructions.
- 3.2 There is no entry form or fee for TYPBC members for these races. Non TYPBC members shall pay a fee of \$20 per race.
- 3.3 Measurement is not required. However, safety inspections may be undertaken.
- 3.4 To be eligible to compete in these events a competitor shall be a member of a club affiliated to the National Authority.

4.0 Schedule of Events

- All boats shall sign on before each race by completing the form provided at the TYPBC Clubhouse.
- 4.2 Racing Schedule:
The scheduled time of the warning signal will be 5 minutes before the start time as stated in Attachment C.

The dates of the races are:

| | | | |
|--------|--------|-------------|------------|
| Race 1 | Sunday | 22 October | 1300 hours |
| Race 2 | Sunday | 5 November | 1300 hours |
| Race 3 | Sunday | 18 February | 1000 hours |
| Race 4 | Sunday | 15 April | 1200 hours |

5.0 Sailing Instructions

- 5.1 The Sailing Instructions will be the Club General Sailing Instructions. These are printed in this booklet and are also available from the TYPBC office.

6.0 Courses to be sailed

- 6.1 The courses will be as specified in Attachment C.
- 6.2 The course for any race may be set by the race officer to include GPS way point(s). Boats shall pass on the required side of the way point(s). Each skipper is required to keep a GPS track of the boat's course for at least 5 days after the race, and produce this track to the race officer on request.
- 6.2 There are no time limits.

7.0 Scoring

- 7.1 The Low-Points Scoring System of Appendix A will apply.
- 7.2 Two races shall be completed to constitute a series.
- 7.3 A total of 4 races are scheduled for the series, none will be discarded.
- 7.4 Handicap scoring shall be club handicap.
- 7.4 If sufficient short handed entries are received, there will be additional scoring for short handed entries.

KEELER INSHORE SERIES

The Organising Authority is TYPBC

NOTICE OF RACE

1.0 Rules

1.1 The racing will be governed by the Racing Rules of Sailing, as specified in the general sailing instructions .

1.2 Safety: see the General Sailing Instructions.

2.0 Changes to Racing Rules

2.1 The Racing Rules will be changed in accordance with RRS 86, as specified in the General Sailing Instructions.

3.0 Eligibility and Entry

3.2 The race series is open to all boats approved by the race committee and includes the divisions as per the general sailing Instructions.

3.2 There is no entry form for these races. There is no entry fee for TYPBC members. Non members shall pay an entry fee of \$20 per race

3.3 Measurement is not required. However, safety inspections may be undertaken.

3.4 To be eligible to compete in these events a competitor shall be a member of a club affiliated to the National Authority.

4.0 Schedule of Events

All boats shall sign on before each race by completing the form provided at the TYPBC Clubhouse.

4.2 Racing Schedule:

The scheduled time of the warning signal for the first division/s will be 5 minutes before the start time as stated in Attachment C. The succeeding divisions will start as per Sailing Instruction 5.3 and 5.4.

The dates of the races are:

| | |
|----------------------|-----------------------------|
| Race 1: 17 September | Opening day race |
| Race 2: 23 September | A Beacon- Mayor Island Race |
| Race 3: 23 September | Mayor Island-A Beacon Race. |
| Race 4 18 February | Mike Garner Memorial Race |
| Race 5 15 April | Closing day race |

5.0 Sailing Instructions

5.2 The Sailing Instructions will be the Club General Sailing Instructions. These are printed in this booklet and are also available from the TYPBC office.

6.0 Courses to be sailed

6.1 The courses will be as specified in Attachment C.

6.2 The course for any race may be set by the race officer to include a GPS way point. Boats shall pass on the required side of the way point. Each skipper is required to keep a GPS track of the boat's course for at least 5 days after the race, and produce this track to the race officer on request.

6.2 There are no time limits.

7.0 Scoring

7.1 The Low-Points Scoring System of Appendix A will apply.

7.2 Two races shall be completed to constitute a series.

7.3 A total of 4 races are scheduled for the series. If 3 or more races are completed, the worst score shall be discarded.

7.4 Handicap scoring shall be on club handicap and PHRF.

7.5 If sufficient 2 handed entries are received, there will be additional scoring for 2 handed entries.

MULTIHULL HARBOUR SERIES

The Organising Authority is Tauranga Yacht and Power Boat Club Inc., PO Box 14352, Tauranga
Telephone (07) 578 5512 Fax (07) 578 5595

NOTICE OF RACE

1.0 Rules

1.1 The racing will be governed by the 'Racing Rules of Sailing (RRS), as specified in the club general sailing instructions.

1.2 The YNZ Safety Regulations Part II Category 5 (Offshore Multihulls) or as appropriate for unballasted centreboard boats (including multihulls) shall apply. Skippers attention is drawn to the general sailing instructions with regard to equipment required to be carried.

2. Changes to Racing Rules

2.1. The Racing Rules will be changed in accordance with RRS 86, as specified in the general sailing instructions..

3. Eligibility and Entry

The races are open to all boats approved by the race committee

There is no entry form or fee to be completed for these races.

Measurement is not required. However, safety inspections may be undertaken.

To be eligible to compete in these events a skipper shall be a member of a club affiliated to the National Authority.

All boats must sign on before each race by completing the form provided at the TYPBC clubhouse, or forwarding a form by fax from the Harbour Bridge Marina..

4. Schedule of Events

The scheduled time of the warning signal for the first division/s will be 5 minutes before the start time as stated in Attachment C.

The dates of the races are :

1. Opening Day race: 17 September
2. MH Series 2 29 October
3. Matakana Classic: 11 or 12 November
4. Multihull Christmas race: 20 December
5. Motuhoa Race: 10 February
6. Papamoa SLSC 18 February
7. Karewa Closing day race: 15 April.

In the event of inclement weather, or lack of sufficient entries for any race in the series, the Multihull Committee may postpone the race to a later date, or change the course to be sailed.

5. Sailing Instructions

The Sailing Instructions will be the Club general Sailing Instructions, or the specific sailing instructions for the events, in the case of the Matakana Classic, & Matakana Raid. The club general instructions are printed in this booklet and are also available from the TYPBC office.

6. Starting line

The Starting Line shall be the clubhouse starting line, unless otherwise specified for any race..

7. Scoring

The Low-Points Scoring System of Appendix A will apply.

If 4 races or more are completed, boats may drop their worst performance.

Handicap scoring will be on club handicap.

SHORT HANDED SERIES

The organising authority is TYPBC

NOTICE OF RACE

1.0 Rules

- 1.1 The racing will be governed by the Racing Rules of Sailing as specified in the Club general sailing instructions.
- 1.2 For courses incorporating a GPS way point mark, boats shall carry an operating fixed or handheld GPS unit.

2.0 Changes to Racing Rules

- 2.1 The Racing Rules will be changed in accordance with RRS rule 86, as specified in the General Sailing Instructions.

3.0 Eligibility and Entry

- 3.3 The race series is open to all boats approved by the race committee.
- 3.2 There is no entry form or fee for TYPBC members for these races. Non members shall pay a fee of \$20 per race.
- 3.3 Measurement is not required. However, safety inspections may be undertaken.
- 3.4 To be eligible to compete in these events a competitor shall be a member of a club affiliated to the National Authority.

4.0 Schedule of Events

- All boats shall sign on before each race by completing the form provided at the TYPBC Clubhouse.
- 4.2 Racing Schedule:
The scheduled time of the warning signal will be 5 minutes before the start time as stated in Attachment C.
The dates of the races are:

| | | |
|--------|----------|--------------|
| Race 1 | Saturday | 30 September |
| Race 2 | Saturday | 18 November |
| Race 3 | Saturday | 13 January |
| Race 4 | Saturday | 17 March |

5.0 Sailing Instructions

- 5.3 The Sailing Instructions will be the Club General Sailing Instructions. These are printed in this booklet and are also available from the TYPBC office.

6.0 Courses to be sailed

- 6.1 The courses will be as specified in Attachment C.
- 6.2 The course for any race may be set by the race officer to include GPS way point(s). Boats shall pass on the required side of the way point(s). Each skipper is required to keep a GPS track of the boat's course for at least 5 days after the race, and produce this track to the race officer on request.
- 6.2 The Race Officer may change or shorten the course at any time by radio message over VHF Channel 77.
- 6.3 The time limit is contained in the General Sailing Instructions.

7.0 Scoring

- 7.1 The Low-Points Scoring System of Appendix A will apply.
In the event that one or more boats has finished within the time limit for that race, and other boats have not finished within the extended time limit for that race, then boats still racing at the expiry of the extended time limit shall be scored points for the finishing place one more than the number of boats that have finished that race.
- 7.2 Two races shall be completed to constitute a series.
- 7.3 A total of 4 races are scheduled for the series.
If 3 or more are completed, the worst score shall be discarded.
- 7.4 Handicap scoring shall be club handicap.

8.0 Crew & Sailing Assistance

- 8.1 Autopilots & tiller pilots may be used, see General Sailing Instructions.
- 8.2 Boats may also carry children under the age of 12, who will not be counted as crew members.
- 8.3 Boats may race with 1, 2 or 3 crew members.

BURNSCO MARINE WINTER SERIES

The Organising Authority is Tauranga Yacht and Power Boat Club Inc., PO Box 14352, Tauranga
Telephone (07) 578 5512

This series is proudly sponsored by:



NOTICE OF RACE

1.0 Rules

1.1 The racing will be governed by the Racing Rules of Sailing as specified in the club general sailing instructions.

2.0 Changes to Racing Rules

2.1 The Racing Rules will be changed in accordance with Rule 86, as specified in the general Sailing Instructions.

3.0 Eligibility and Entry

3.1 The race series is open to all boats approved by the race committee

3.2 Entries will be accepted by completing the entry form available at the TYPBC office and accompanied by a fee of \$45 for TYPBC members, or \$90 For non TYPBC members for the series. This fee shall be paid before the boat enters the race area, or the boat may not be classed as a starter.

3.3 Entry to the series after the 3rd race will be considered as a late entry, and will be accepted only at the Race Committee's discretion.

3.4 Measurement is not required however safety inspections may be undertaken.

3.5 To be eligible to compete in this event a competitor shall be a member of a club affiliated to the National Authority.

4.0 Schedule of Events

4.1 Racing Schedule:

The scheduled time of the warning signal for the first division/s will be 1255 hours on each race day. The succeeding divisions will start as per Sailing Instruction 5.3 and 5.4.

The dates of the races are:

| | | | | | |
|--------|----------|--------|-----------|--------|---------|
| Race 1 | 13 May | Race 2 | 27 May | Race 3 | 10 June |
| Race 4 | 24 June | Race 5 | 8 July | Race 6 | 22 July |
| Race 7 | 5 August | Race 8 | 19 August | | |

5.0 Sailing Instructions

5.1 The Sailing Instructions will be the Club General Sailing Instructions. These are printed in this booklet, and are also available from the TYPBC office.

6.0 Scoring

6.1 The Low-Points Scoring System of Appendix A will apply.

In the event that one or more boats in the relevant division has finished within the time limit for that race, and other boats have not finished within the extended time limit for that race, then boats still racing at the expiry of the extended time limit shall be scored points for the finishing place one more than the number of boats that have finished that race.

6.2 Three races will be required to be completed to constitute a series.

6.3 A total of 8 races are scheduled for the series, of which the **worst** result will be discarded for the series if 6 or more races are completed.

FINISHING DECLARATION

Race Name _____ Boat Name _____ Sail No. _____

Start Time _____ Finish Time _____ NZST/NZSST

DID / DID NOT complete the course in accordance with the rules.

Signed: _____ or _____
SkipperNavigator

Boat in front - Name _____ - Finish Time _____

Boat behind - Name _____ - Finish Time _____

.....

FINISHING DECLARATION

Race Name _____ Boat Name _____ Sail No. _____

Start Time _____ Finish Time _____ NZST/NZSST

DID / DID NOT complete the course in accordance with the rules.

Signed: _____ or _____
SkipperNavigator

Boat in front - Name _____ - Finish Time _____

Boat behind - Name _____ - Finish Time _____

.....

FINISHING DECLARATION

Race Name _____ Boat Name _____ Sail No. _____

Start Time _____ Finish Time _____ NZST/NZSST

DID / DID NOT complete the course in accordance with the rules.

Signed: _____ or _____
SkipperNavigator

Boat in front - Name _____ - Finish Time _____

Boat behind - Name _____ - Finish Time _____

FINISHING DECLARATION

Race Name _____ Boat Name _____ Sail No. _____

Start Time _____ Finish Time _____ NZST/NZSST

DID / DID NOT complete the course in accordance with the rules.

Signed: _____ or _____
SkipperNavigator

Boat in front - Name _____ - Finish Time _____

Boat behind - Name _____ - Finish Time _____

.....
FINISHING DECLARATION

Race Name _____ Boat Name _____ Sail No. _____

Start Time _____ Finish Time _____ NZST/NZSST

DID / DID NOT complete the course in accordance with the rules.

Signed: _____ or _____
SkipperNavigator

Boat in front - Name _____ - Finish Time _____

Boat behind - Name _____ - Finish Time _____

.....
FINISHING DECLARATION

Race Name _____ Boat Name _____ Sail No. _____

Start Time _____ Finish Time _____ NZST/NZSST

DID / DID NOT complete the course in accordance with the rules.

Signed: _____ or _____
SkipperNavigator

Boat in front - Name _____ - Finish Time _____

Boat behind - Name _____ - Finish Time _____

FINISHING DECLARATION

Race Name _____ Boat Name _____ Sail No. _____

Start Time _____ Finish Time _____ NZST/NZSST

DID / DID NOT complete the course in accordance with the rules.

Signed: _____ or _____
SkipperNavigator

Boat in front - Name _____ - Finish Time _____

Boat behind - Name _____ - Finish Time _____

.....
FINISHING DECLARATION

Race Name _____ Boat Name _____ Sail No. _____

Start Time _____ Finish Time _____ NZST/NZSST

DID / DID NOT complete the course in accordance with the rules.

Signed: _____ or _____
SkipperNavigator

Boat in front - Name _____ - Finish Time _____

Boat behind - Name _____ - Finish Time _____

.....
FINISHING DECLARATION

Race Name _____ Boat Name _____ Sail No. _____

Start Time _____ Finish Time _____ NZST/NZSST

DID / DID NOT complete the course in accordance with the rules.

Signed: _____ or _____
SkipperNavigator

Boat in front - Name _____ - Finish Time _____

Boat behind - Name _____ - Finish Time _____

